

CK200 upgrading manual

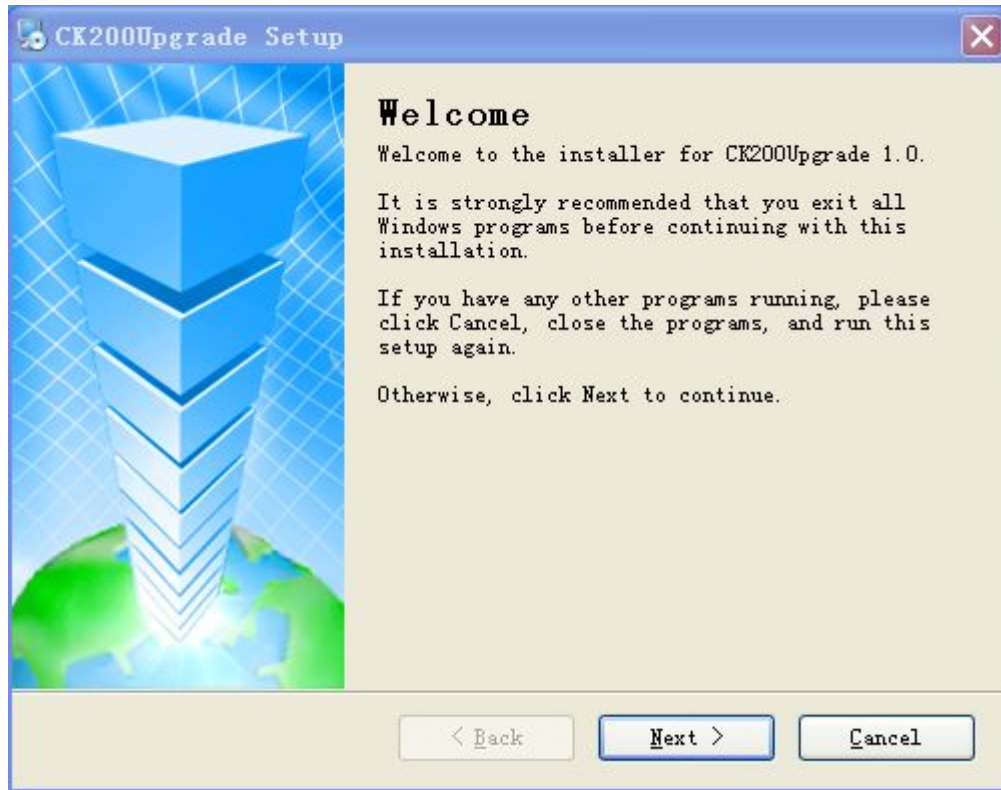
The context concludes the installing and use of the Client server ,the way of upgrading CK200 and the solution of the possible problems while upgrading.

Please read this instruction carefully in order to ensure the upgrading procedure going smoothly.

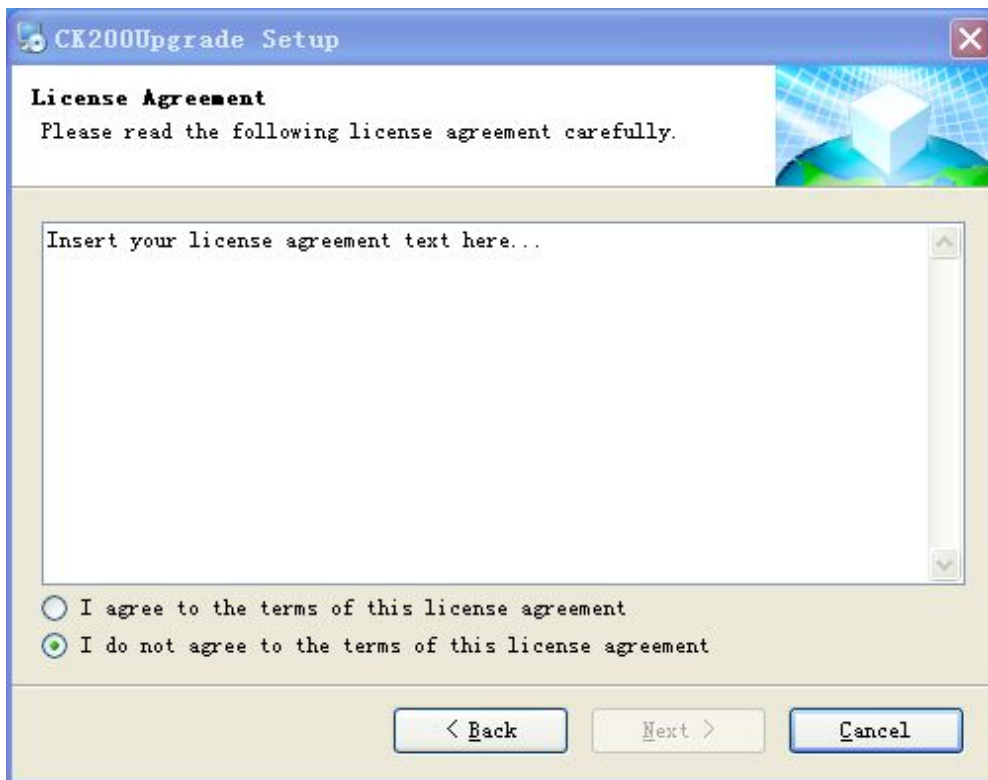
CK200Upgrade client server instruction

Installation of the CK200Upgrade procedure client server software.

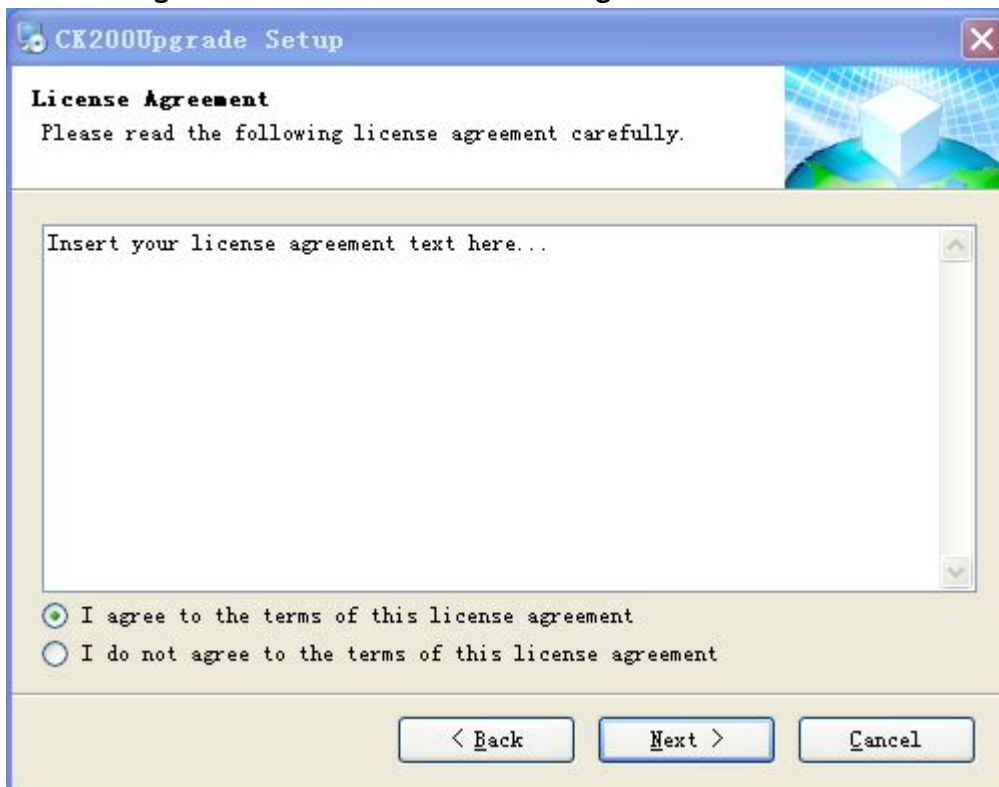
Double click on “**CK200Upgrade Setup.exe**” procedure.



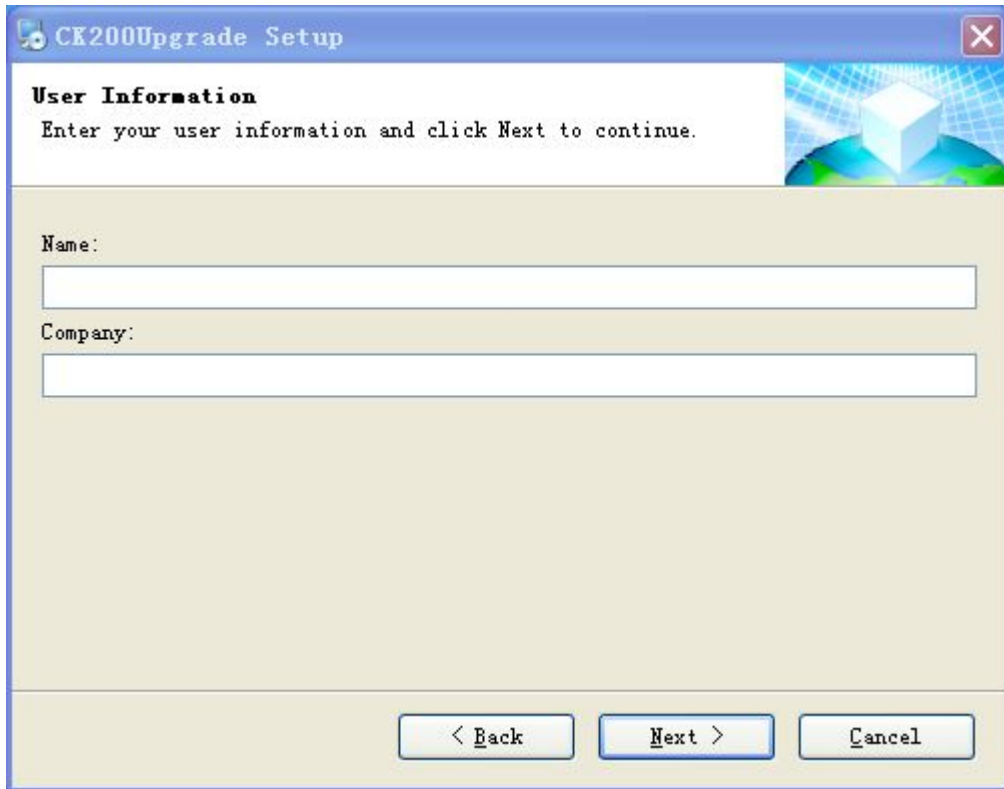
Click on “**Next**”.



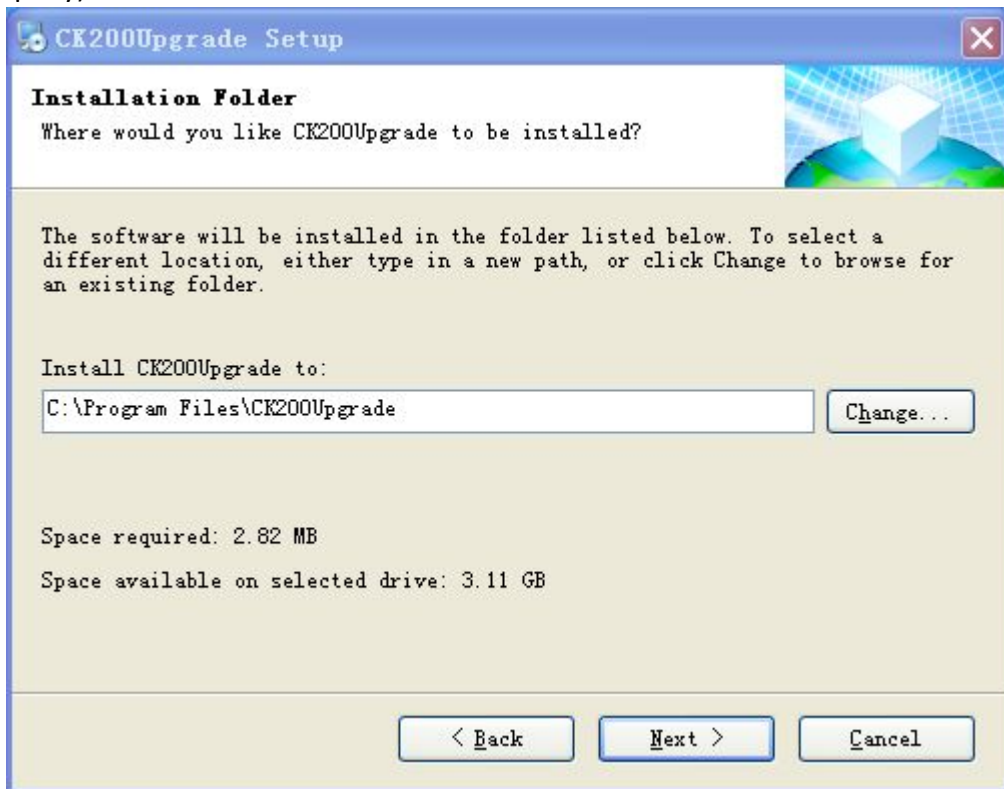
Choose "I agree to the terms of this license agreement".



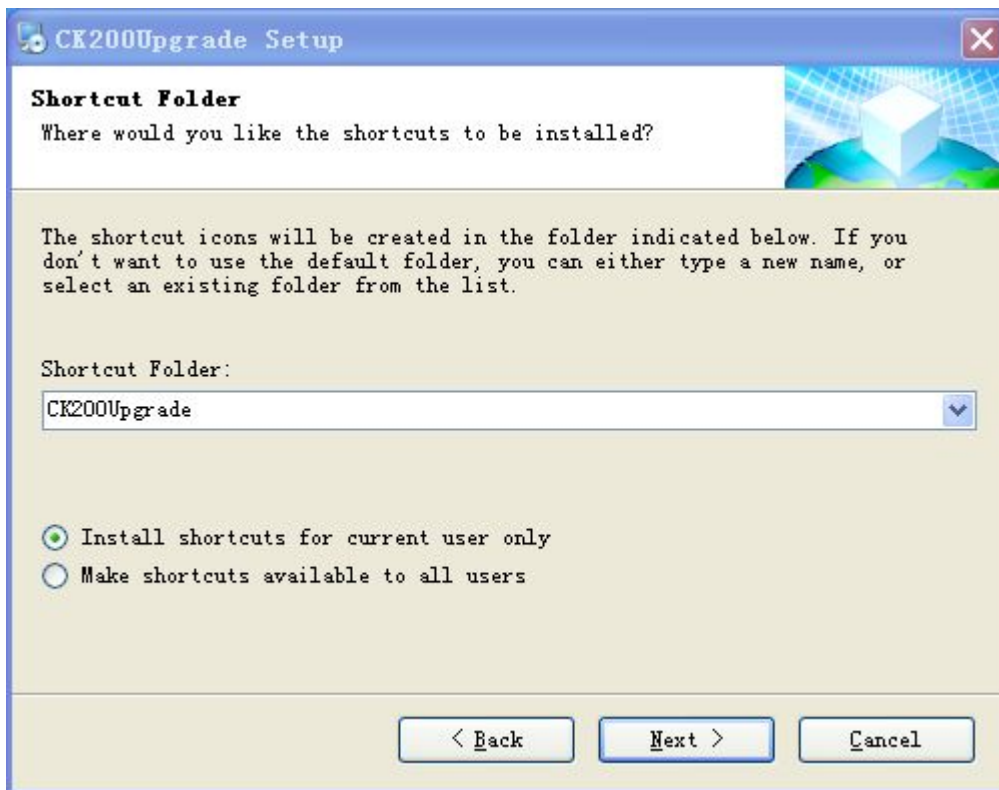
Click on "Next".



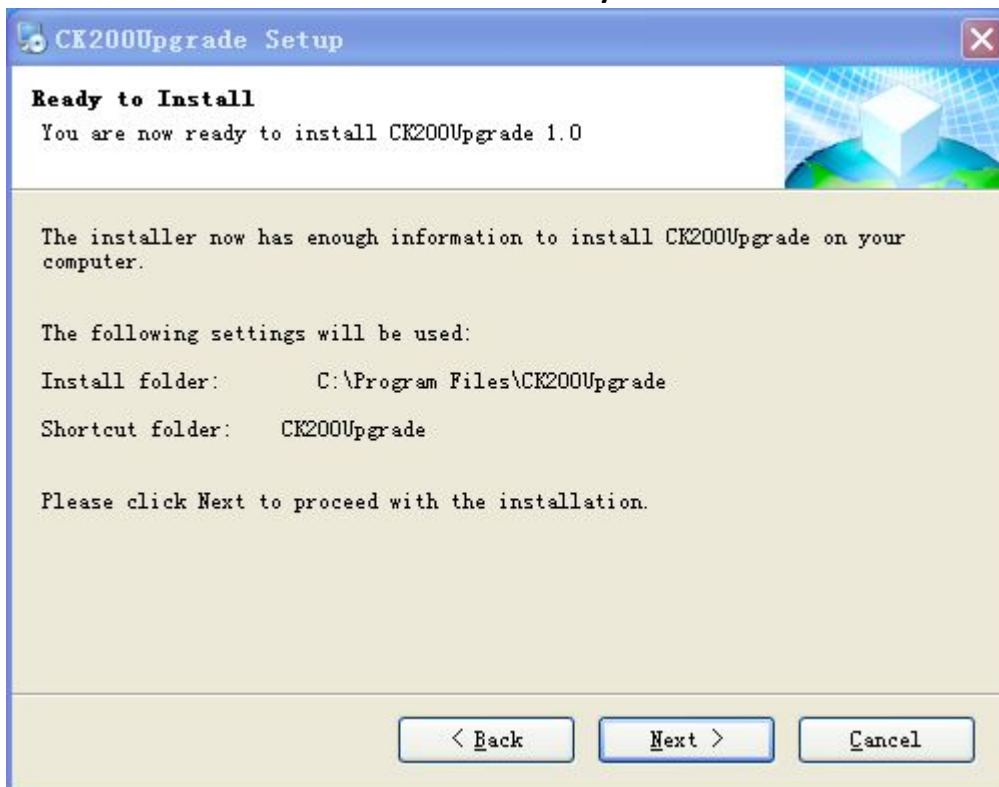
Fill in Name and Company and click on "Next" (you can't install this software without filling in the name and company while you can use the default name and company).



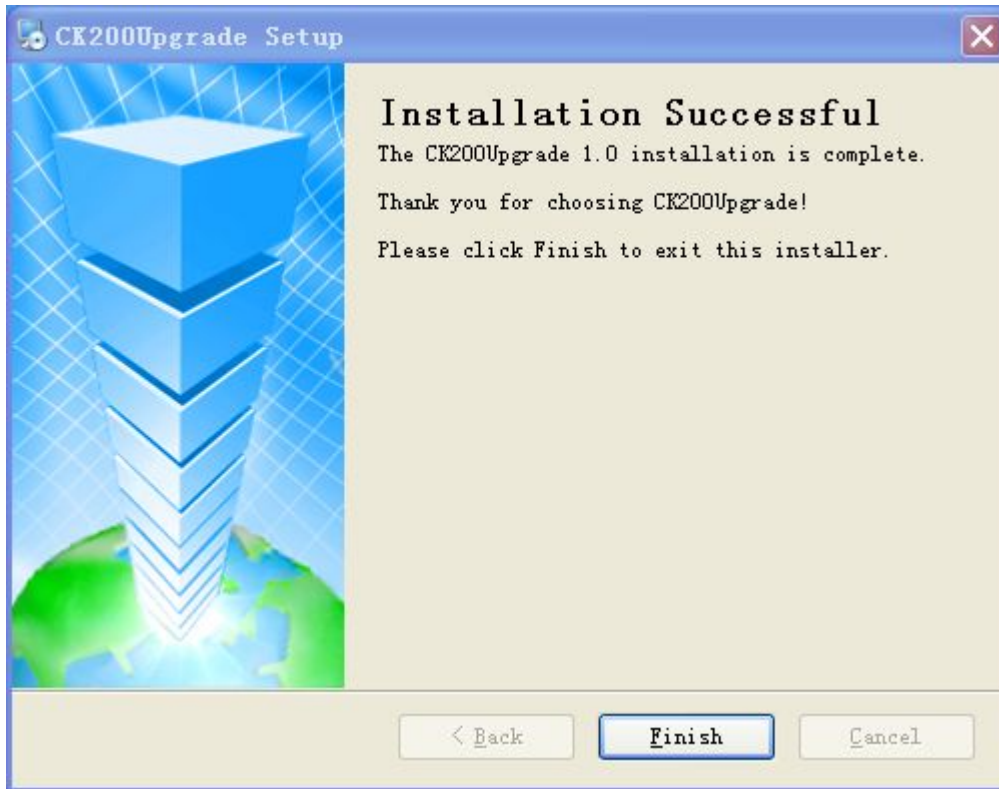
Click on "Next".



Choose "Install shortcuts for current user only" and click on "Next".



Click on "Next" and start installing.

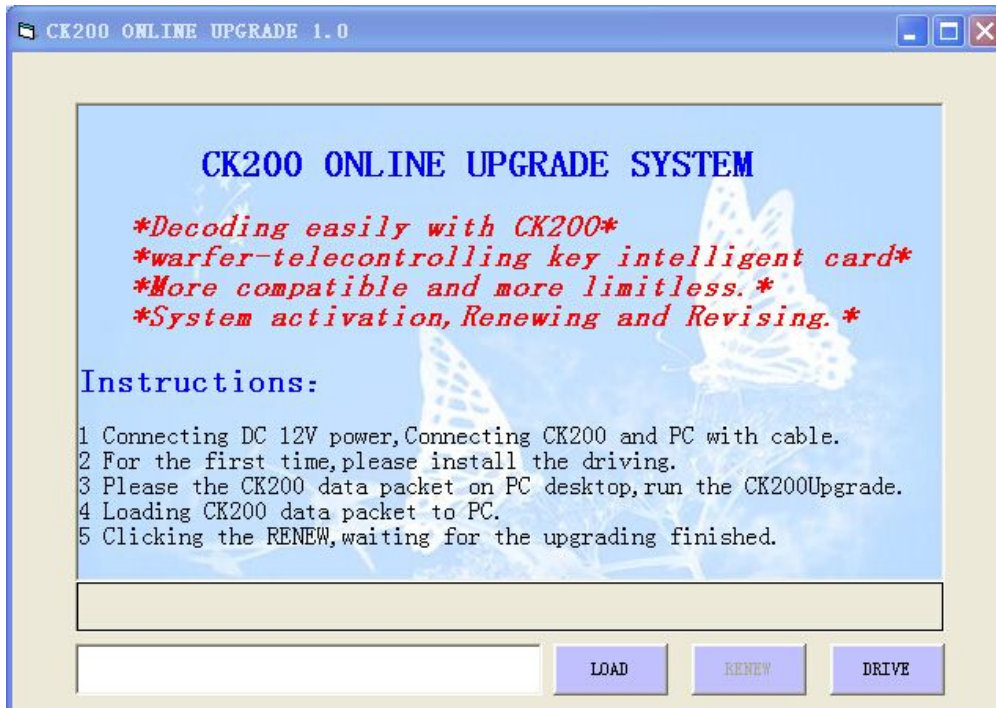


It has been installed successfully when the above picture is shown.

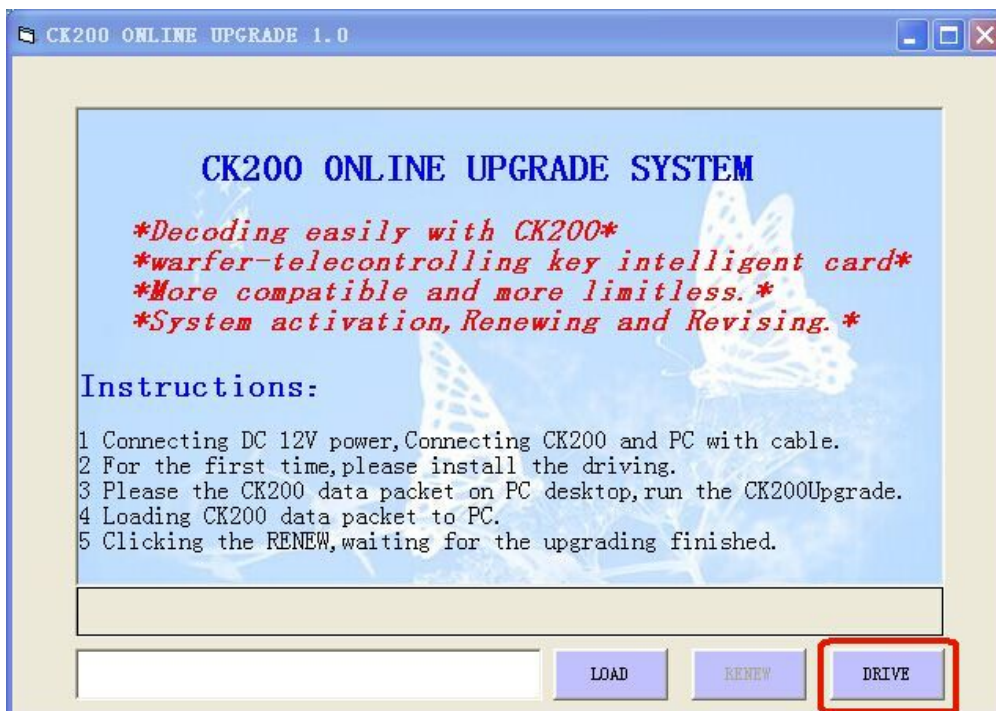
Upgrading CK200

A connector cable and a 12V/1A power adapter are necessary when you are going to upgrade CK200.

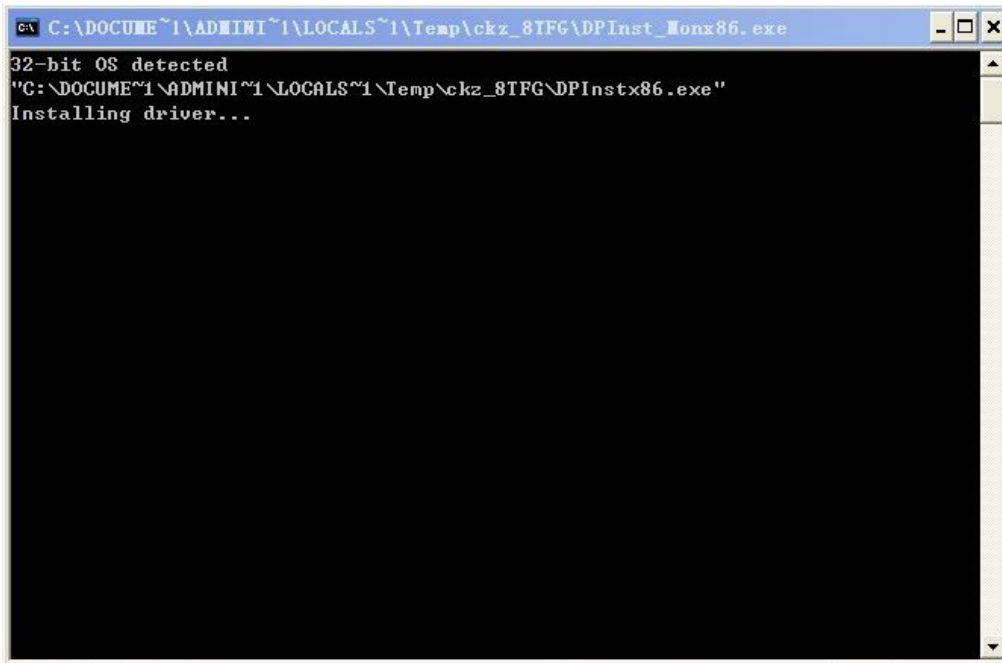
1. Click on the **"CK200Upgrade"** on the desktop and run the CK200Upgrade.exe program.



2. For the first time, click on the "DRIVE" button to install the CK200 drive.

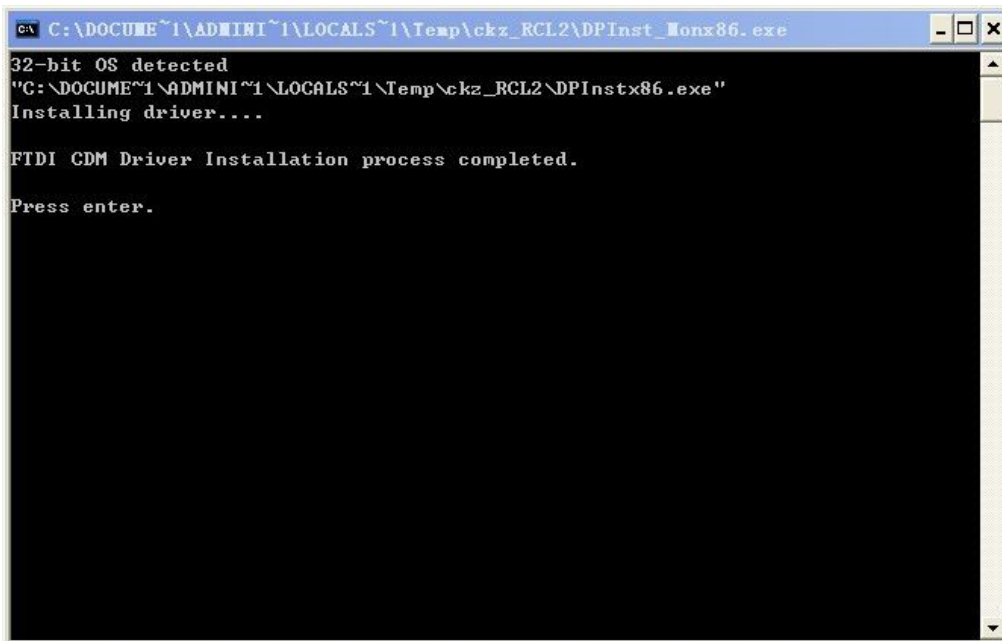


Pop_up a window after clicking on the DRIVE button.



```
C:\DOCUMENTS\ADMINISTRATOR\LOCALS\Temp\ckz_8TFG\DPInst_Monx86.exe
32-bit OS detected
"C:\DOCUMENTS\ADMINISTRATOR\LOCALS\Temp\ckz_8TFG\DPInstx86.exe"
Installing driver...
```

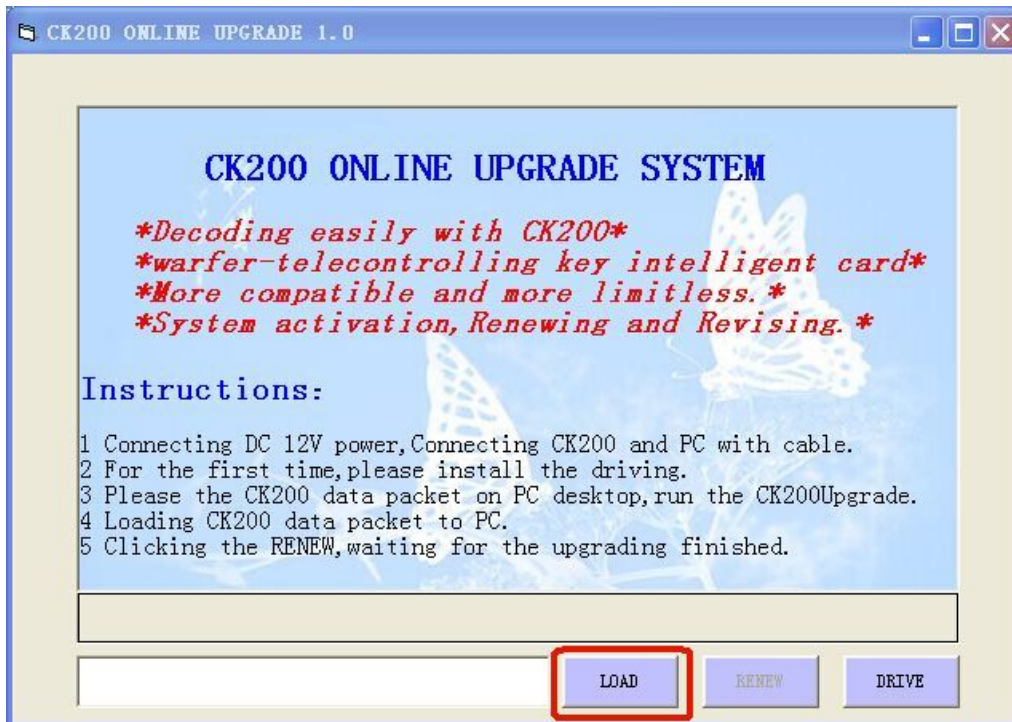
The install is completed when "Press enter" is on the window, then you can close the window.



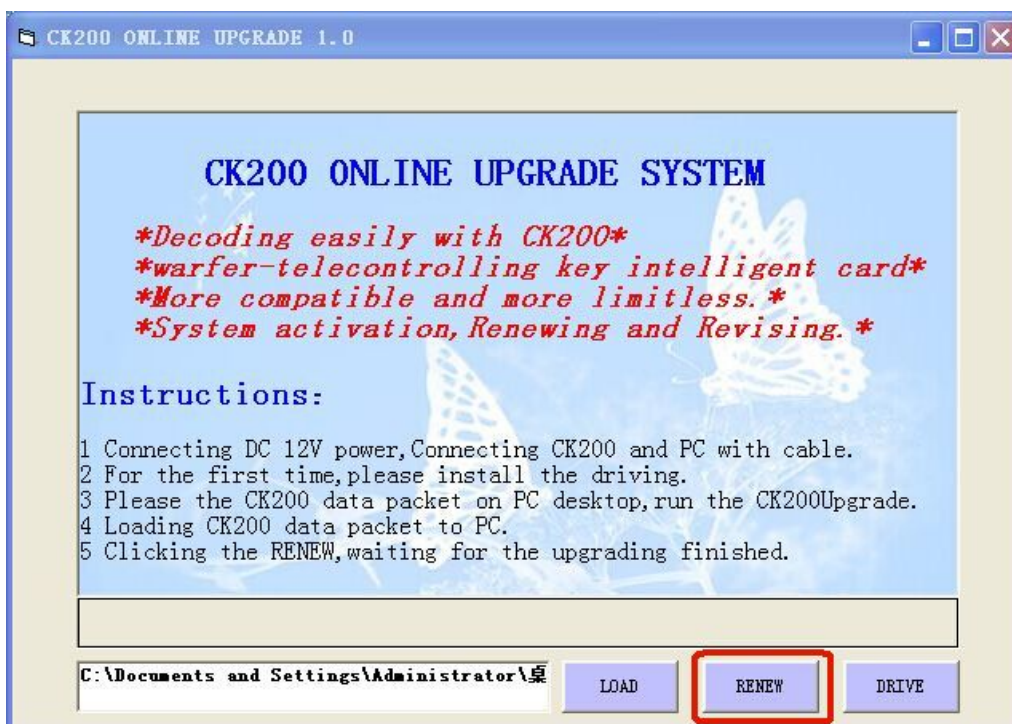
```
C:\DOCUMENTS\ADMINISTRATOR\LOCALS\Temp\ckz_RCL2\DPInst_Monx86.exe
32-bit OS detected
"C:\DOCUMENTS\ADMINISTRATOR\LOCALS\Temp\ckz_RCL2\DPInstx86.exe"
Installing driver...
FTDI CDM Driver Installation process completed.
Press enter.
```

3. Inserted the 12V power line into the square hole in the side of CK200 at this time, CK200 is the normal state of running. Inserted one end of the upgrade line into the matching socket which is at the bottom of the CK200 inserted another end of the upgrade line into the USB which is on PC. There will be "Found new hardware" prompt display on the lower right corner, when prompted to "New hardware is installed and ready to use" means that the CK200 and the computer has been connected.

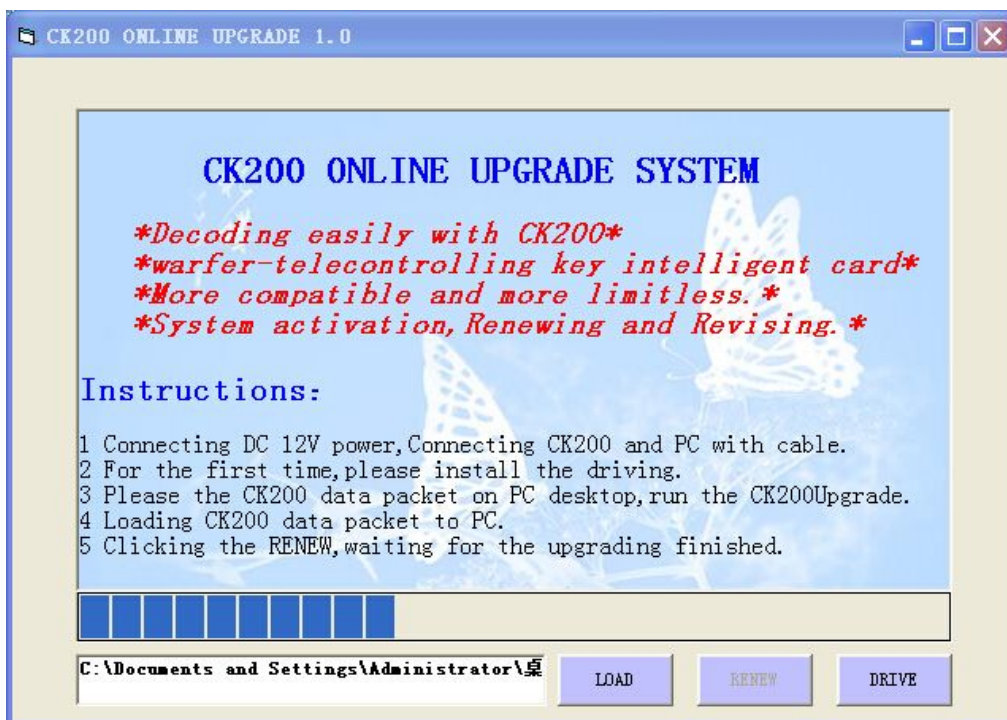
4. Click on "LOAD" button, and install the CK200 upgrading file.



5. After installing it successfully, click on “RENEW”.



6. After Clicking the RENEW button “Upgrading, please wait.....” will be showing on the CK200 screen. At the same time, a progressbar will be showing on the interface of CK200 client programme.



7. When the "ReNewing completed!Run ? " dialog box appears, Click "Yes" to complete the upgrade. At the same time, The CK200 is in normal operation State. Then, you can remove the upgrade cable and the power adapter.



Problems and Solutions:

Problems	Solutions
Hardware driver installation failed	Reinstall the driver again
A "No ready" dialog box is pop up	Please check with your hardware device.
The CK200 screen stays in the "Upgrading, Please wait...." interface.	After the restart, reoperation
Any error dialog box is displayed during the upgrade	After the restart, re operation
After insertion of CK200 12V power adapter screen does not light	Use the DC adapter factory authorized After removing the upgrade cable, access 12V DC power

If there are more questions, please contact your local dealer or manufacturer.