

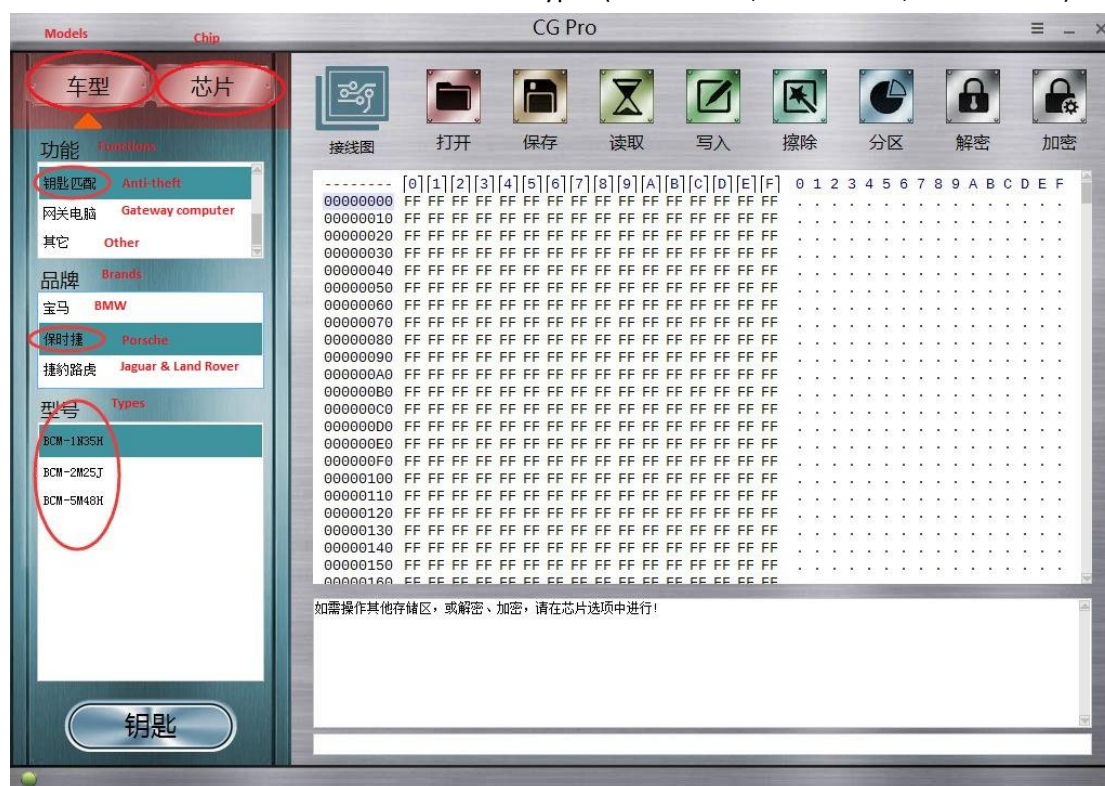
CG-Pro Porsche key reading and writing free update

-2018.6.16

New! [CG-Pro programmer](#) free update Porsche key reading and writing function.

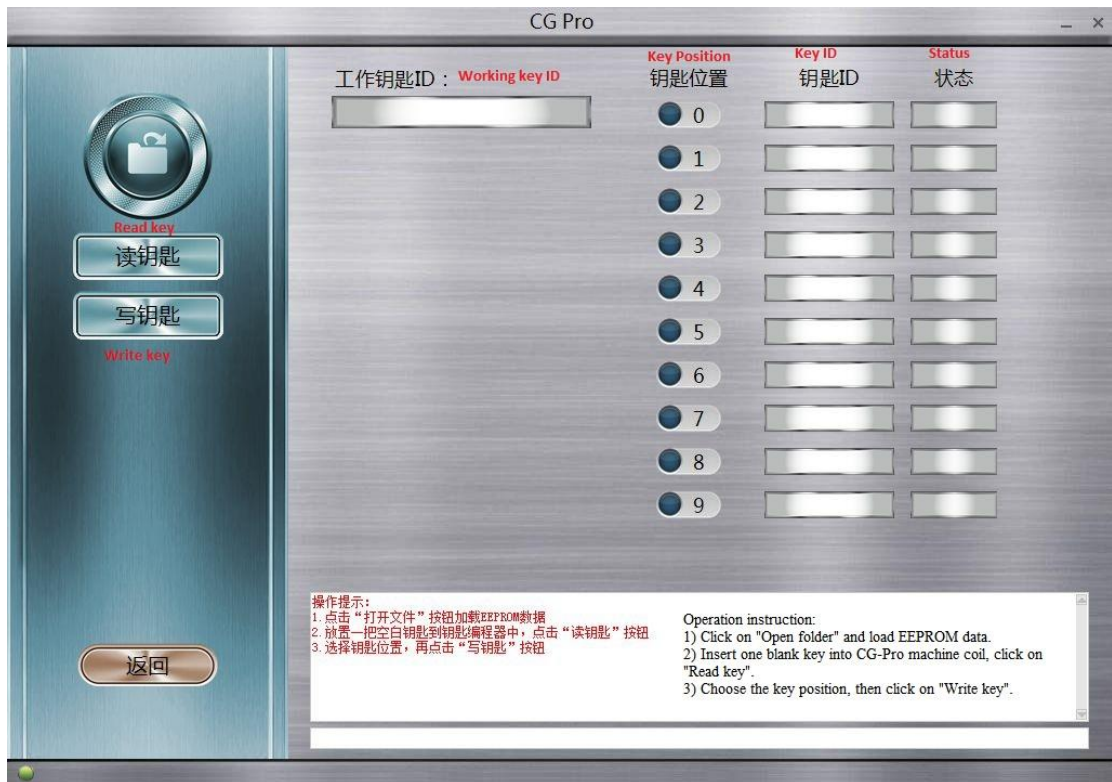
Info:

1. Click on "Models" -> Anti-theft -> Porsche -> types (BCM-1N35H, BCM-2M25J, BCM-5M48H).



How to read and write Porsche key?

- 1) Click on "Open folder" and load EEPROM data.
- 2) Insert one blank key into CG-Pro machine coil, click on "Read key".
- 3) Choose the key position, then click on "Write key".



2. CG-Pro supported "NEC" types:

D70F3548

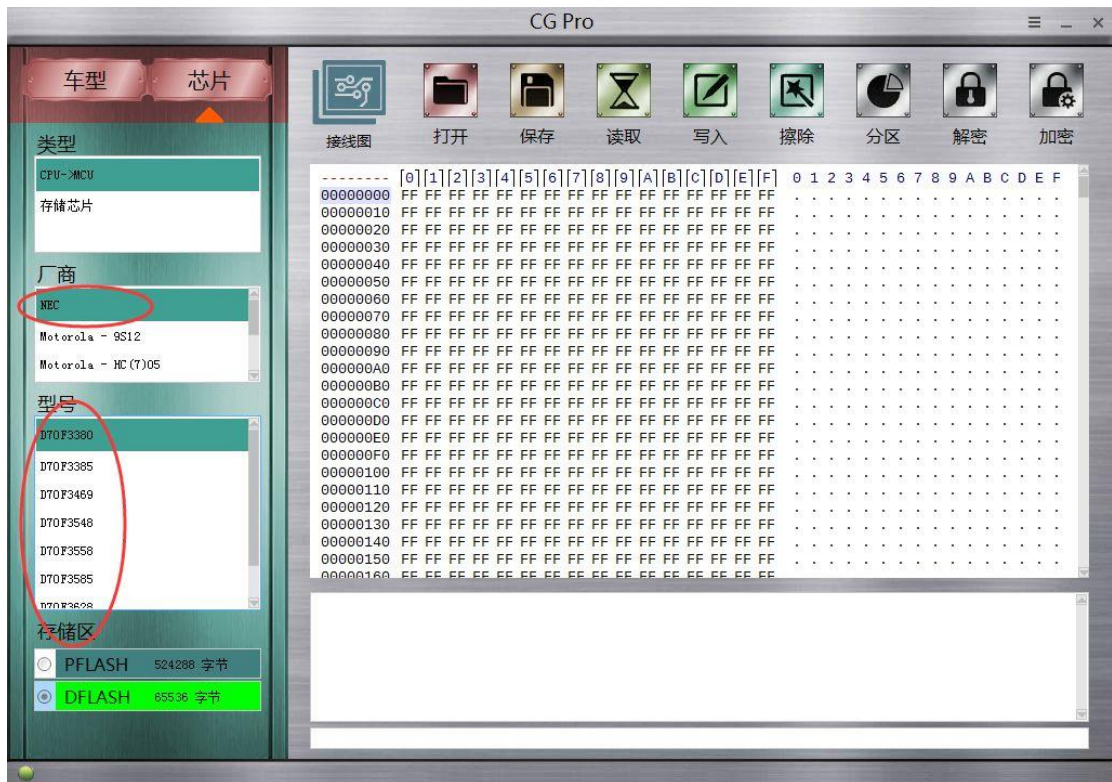
D70F3558

D70F3585

D70F3385

D70F3469

D70F3628



3. CG-Pro supported "Motorola -9S12":

9S12HA32-0M34S

9S12HY32-0M34S

9S12HA48-0M34S

9S12HY48-0M34S

9S12HA64-0M34S

9S12HY64-0M34S

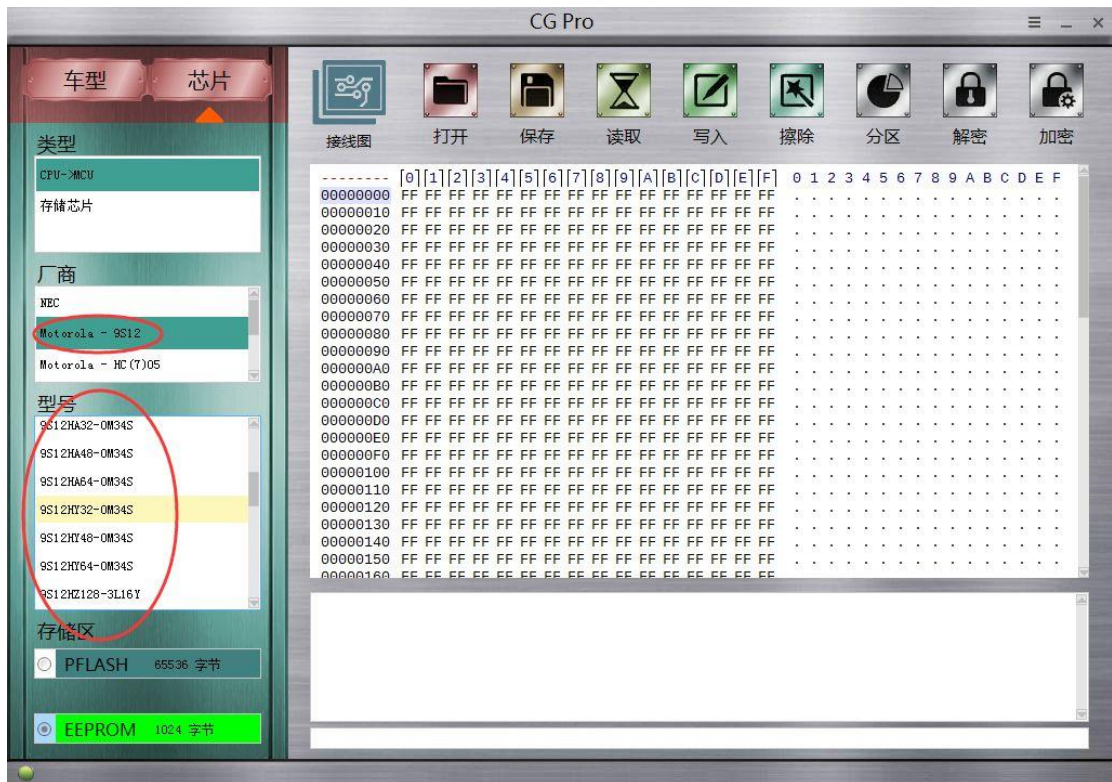
9S12XHY128-0M23Y

9S12XHY256-0M23Y

9S12HZ128-3L16Y

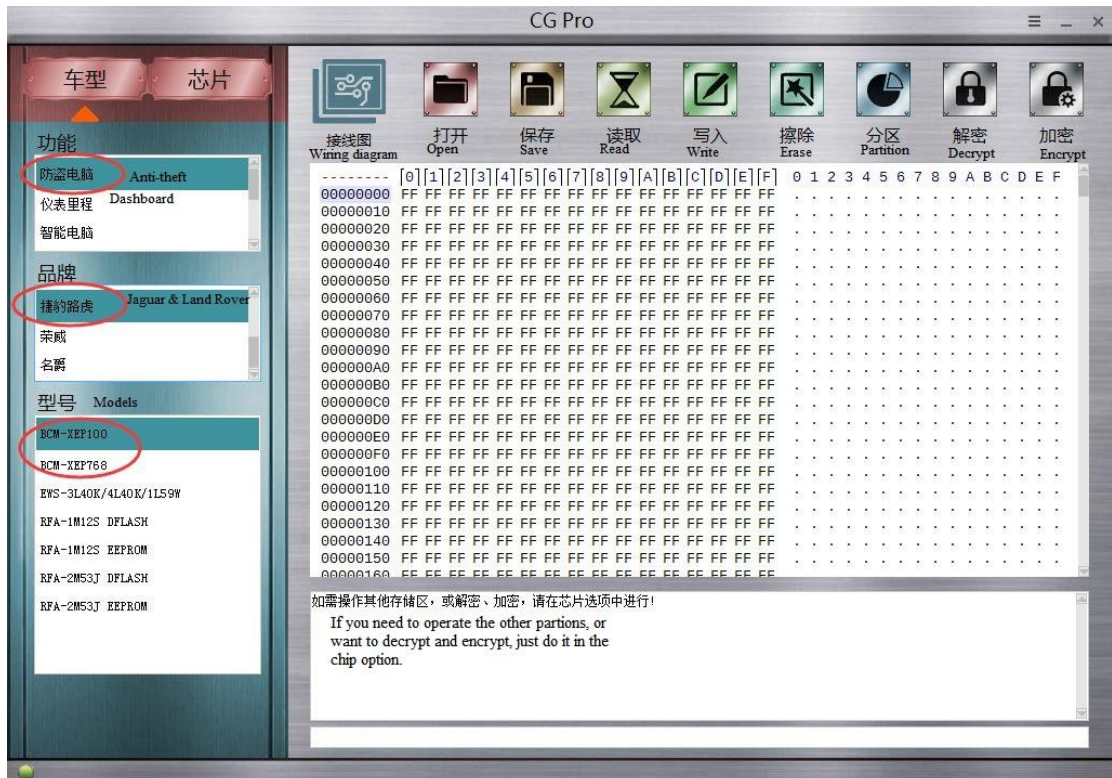
9S12HZ256-3L16Y

9S12XEP768-4M48H



More CG Pro update:

1. Click on "Models" -> Anti-theft -> Jaguar & Land Rover
BCM-XEP768 (Confirmed)
BCM-XEP100(Confirmed)



2. An increasing number of optional adapters are newly tested and available in the market such as:

[M35080/35160 Adapter](#)

[EEPROM & V850 Adapter](#)

[HC705/908 AM29FXXX AM29Blxxx 3 in 1 Adapter](#)

[DB25 Adapter](#)

[711 Adapter](#)

If you think CG Pro is worth to own, you can go to:

<http://www.obd2eshop.com/wholesale/cg-pro-9s12-freescale-programmer.html>