

Edition December 2019

KT200

USER MANUAL

General usage guide



<https://www.ktm200pro.com>

INDEX

<u>Minimum requirements - Requisiti minimi</u>	<u>3</u>
<u>Setup.exe – Windows 7</u>	<u>4</u>
<u>Setup.exe – Windows 10</u>	<u>9</u>
<u>DFBTech Updater</u>	<u>19</u>
<u>Licence – Licenza</u>	<u>21</u>
<u>Account settings – Impostazione account</u>	<u>23</u>

REQUISITI MINIMI

MINIMUM REQUIREMENTS

Il programma KT200 è supportato dai seguenti sistemi operativi:

Windows XP
Windows 7
Windows Vista
Windows 8
Windows 10

Tuttavia noi consigliamo l'utilizzo su computer con sistema operativo **Windows 7** o **Windows 10** con le seguenti caratteristiche hardware minime:

- Processore Intel i5
- Ram 4GB

The software KT200 is supported by following operating systems:

Windows XP
Windows 7
Windows Vista
Windows 8
Windows 10

However we recommend a computer with **Windows 7** or **Windows 10** with these following minimum hardware requirements:

- Processor Intel i5
- RAM 4GB

SETUP.EXE - WINDOWS 7

Dal sito www.dfox-pro.com è sempre disponibile l'ultima versione aggiornata del programma *KT200*. Scaricare Setup.exe e salvarlo sul proprio PC.

Fare doppio click sul file Setup.exe:

From the website www.dfox-pro.com it's always available the latest updated version of the *KT200*. Download Setup.exe and save it on your PC.

Double click on the file Setup.exe:



setup

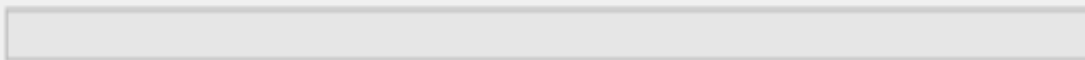
Waiting

Waiting

 QSetup Installation Suite

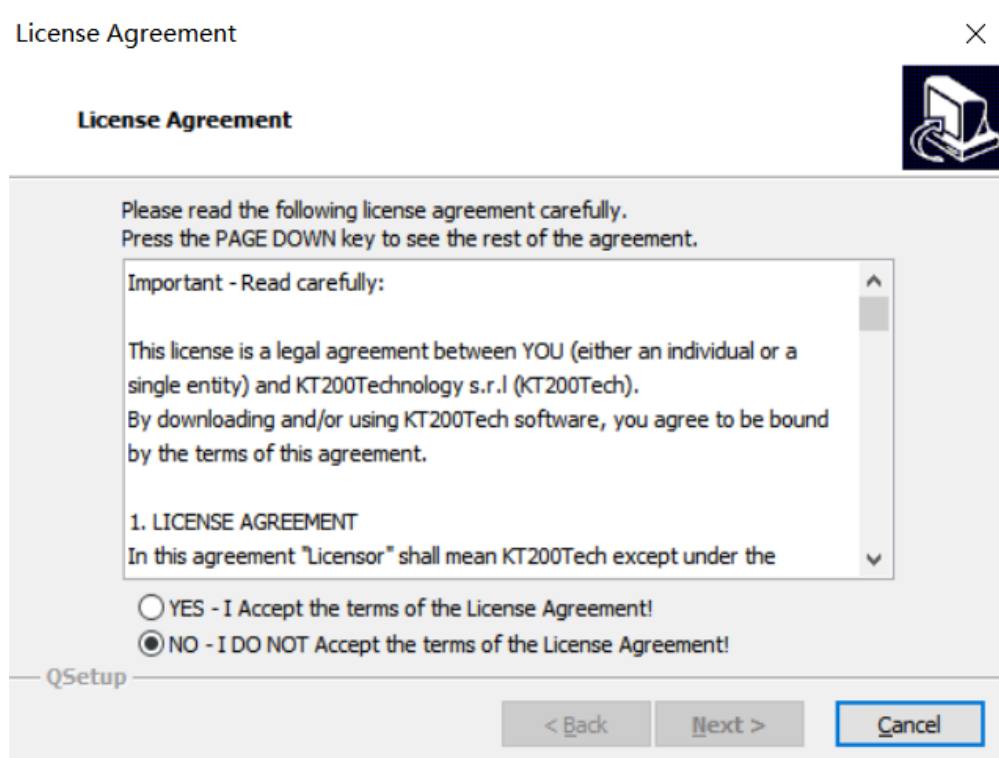


Extracting Files...



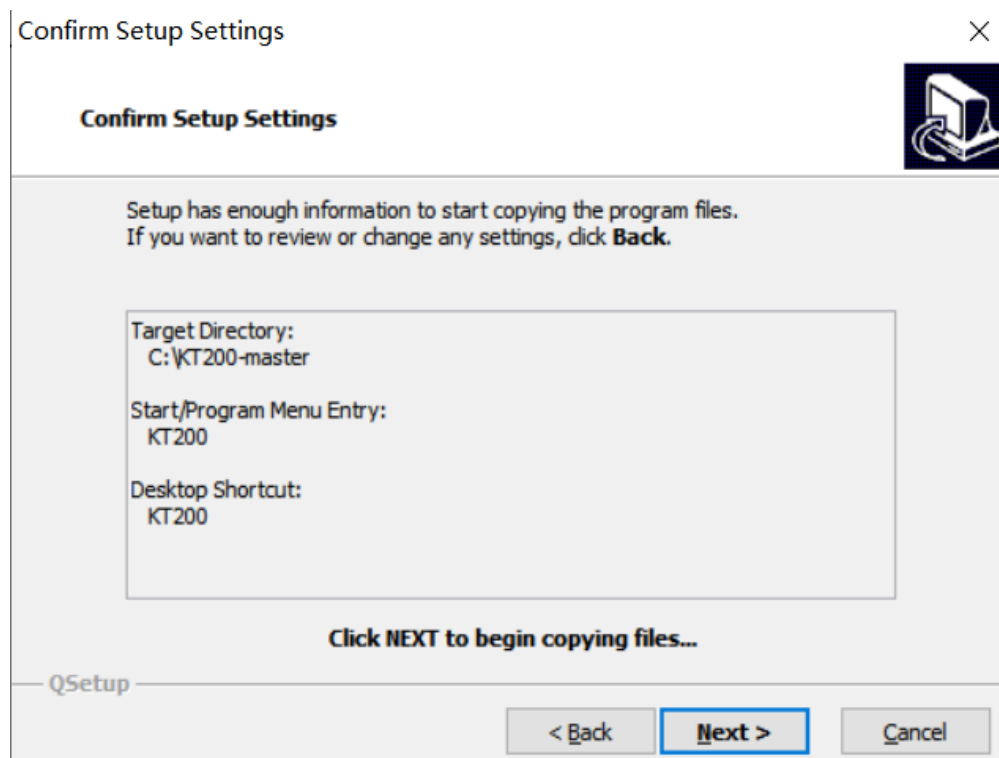
Leggere le condizioni di contratto e accettare i termini di licenza e cliccare Next:

Read the conditions of contract and accept the terms of license and click Next:



Mantenere la cartella di installazione C:\ **KT200-MASTER** e cliccare Next

Maintain the folder of installation C:\ **KT200-MASTER** and click Next



Cliccare Finsh

Click Finsh

Setup Complete



Setup has finished copying files to your computer.

Setup will now launch the program. Select your option below.

Yes, Launch the program file.

Click **Finish** to complete the Setup.

< Back

Finish

|

