



**W211**

**Copy Key With Key**

**CG-MB**

**Connect the equipment, the OBD connects the vehicle, opens the door, and keeps the vehicle voltage stable (12V).**

CGDI-MB OAS 4 20 105

**EIS**

Read/Write Key

Compute Password

Generate EE

Auto Computer

ELV

### EIS Basic Information

SSID  VIN    Allow Modify

EIS number  Mileage  The last key used

The penultimate used

### EIS Key Basic Information

	Used	Disabled
Key 1	<input type="checkbox"/>	<input type="checkbox"/>
Key 2	<input type="checkbox"/>	<input type="checkbox"/>
Key 3	<input type="checkbox"/>	<input type="checkbox"/>
Key 4	<input type="checkbox"/>	<input type="checkbox"/>
Key 5	<input type="checkbox"/>	<input type="checkbox"/>
Key 6	<input type="checkbox"/>	<input type="checkbox"/>
Key 7	<input type="checkbox"/>	<input type="checkbox"/>
Key 8	<input type="checkbox"/>	<input type="checkbox"/>

Key password

Special key

Erase password

Enable Password

Initialized  Personalized

TP cleared  Activated

Dealer EIS  FBS4

Welcome to use!

**open software, click "Read EIS Data"**

CGDI-MB OAS 4 20 105

**EIS**

Read/Write Key

Compute Password

Generate EE

Auto Computer

ELV

### EIS Basic Information

SSID: 68 FD 72 D3 VIN:  [Write](#)

EIS number: 2115451408 Mileage: 0 KM

The last key used: 1

The penultimate used: 4

[Allow Modify](#)

---

### EIS Key Basic Information

Key	Hex	Used	Disabled
Key 1	E9 B8 F4 7E 79 E2 9F 6C	<input checked="" type="checkbox"/>	<input type="checkbox"/>
Key 2	FB 04 20 1B B2 6E 52 7A	<input checked="" type="checkbox"/>	<input type="checkbox"/>
Key 3	D9 B2 D9 0A C4 13 EF 6C	<input checked="" type="checkbox"/>	<input checked="" type="checkbox"/>
Key 4	09 50 B1 9F 3C 34 4F 78	<input checked="" type="checkbox"/>	<input type="checkbox"/>
Key 5	7C 7C DD DA 57 3D 75 AD	<input type="checkbox"/>	<input type="checkbox"/>
Key 6	9F 16 79 28 B9 93 94 69	<input checked="" type="checkbox"/>	<input type="checkbox"/>
Key 7	01 87 A4 5F 75 62 21 B1	<input type="checkbox"/>	<input type="checkbox"/>
Key 8	5C 07 CD E9 C2 A4 BD D7	<input type="checkbox"/>	<input type="checkbox"/>

Key password:  [Copy](#) [Paste](#)

Special key: 7A D9 F9 5D 14 B5 F4 38

Erase password:  [Get](#)

Enable Password:  [Get](#)

Initialized  Personalized

TP cleared  Activated

Dealer EIS  FBS4

[Read EIS Data](#)

[Save EIS Data](#)

[Load EIS Data](#)

[Write EIS Data](#)

[Wipe the EIS](#)

[Clear TP Protection](#)

[Activate EIS](#)

[Disable](#) [Enable](#)

[Sync W204 ELV](#)

Read success!

Read data success, show related information

CGDI-MB OAS 4 20 105

EIS

Read/Write Key

**Compute Password**

Generate EE

Auto Computer

ELV

### Collect Data and Upload the File

EIS Type:

1. Insert the original car key into the EIS
2. Insert key into the CGMB device and wait for the collection
3. Insert the car key into the EIS 10s and dial out
4. Insert the key into the EIS
5. Unplug the key for 5 seconds and then insert the key into EIS
6. Insert the key into the CGMB device
7. Save the generated files

### Query the Server and Wait For the Results

Key password

**Operation Tip:**

1. Please choose the way to collect the key first, and then click the 'Collect Data' button
2. After the collection is completed, click the 'Upload Data' button to upload the collected data
3. Click the 'Query Result' button and check the 'Auto Refresh' option, the program will start the automatic query.

Copy key with key

Copy key without key

**Collect Data**

Upload Data

Query Result

Auto Refresh

Welcome to use!

Turn to “Compute password”, choose “copy key with key”, then click “Collect Data”

CGDI-MB OAS 4 20 105

EIS

Read/Write Key

Compute Password

Generate EE

Auto Computer

ELV

Collect Data and Upload the File

EIS Type:

1. Insert the original car key into the EIS  
2. Insert key into the CGMB device and wait for the collection  
3. Insert the car key into the EIS 10s and dial out  
4. Inser  
5. Unpl  
6. Inse  
7. Save

Please select the key type

The 1 generation key

Other keys

OK

Query

Key pa

Operation Tip:

1. Please choose the way to collect the key first, and then click the 'Collect Data' button  
2. After the collection is completed, click the 'Upload Data' button to upload the collected data  
3. Click the 'Query Result' button and check the 'Auto Refresh' option, the program will start the automatic query.

Copy key with key

Copy key without key

Collect Data

Upload Data

Query Result

Auto Refresh

Welcome to use!

choose "other keys", Click "ok"

CGDI-MB OAS 4 20 105

**EIS**

**Read/Write Key**

**Compute Password**

**Generate EE**

**Auto Computer**

**ELV**

**Collect Data and Upload the File**

EIS Type:

1. Insert the original car key into the EIS  
2. Insert key into the CGMB device and wait for the collection  
3. Insert the car key into the EIS 10s and dial out  
4. Insert the key into the EIS  
5. Unplug the key  
6. Insert the key  
7. Save the general

**Copy key with key**

**Copy key without key**

**Collect Data**

**Upload Data**

**Query Result**

**Auto Refresh**

**Benz Monster**

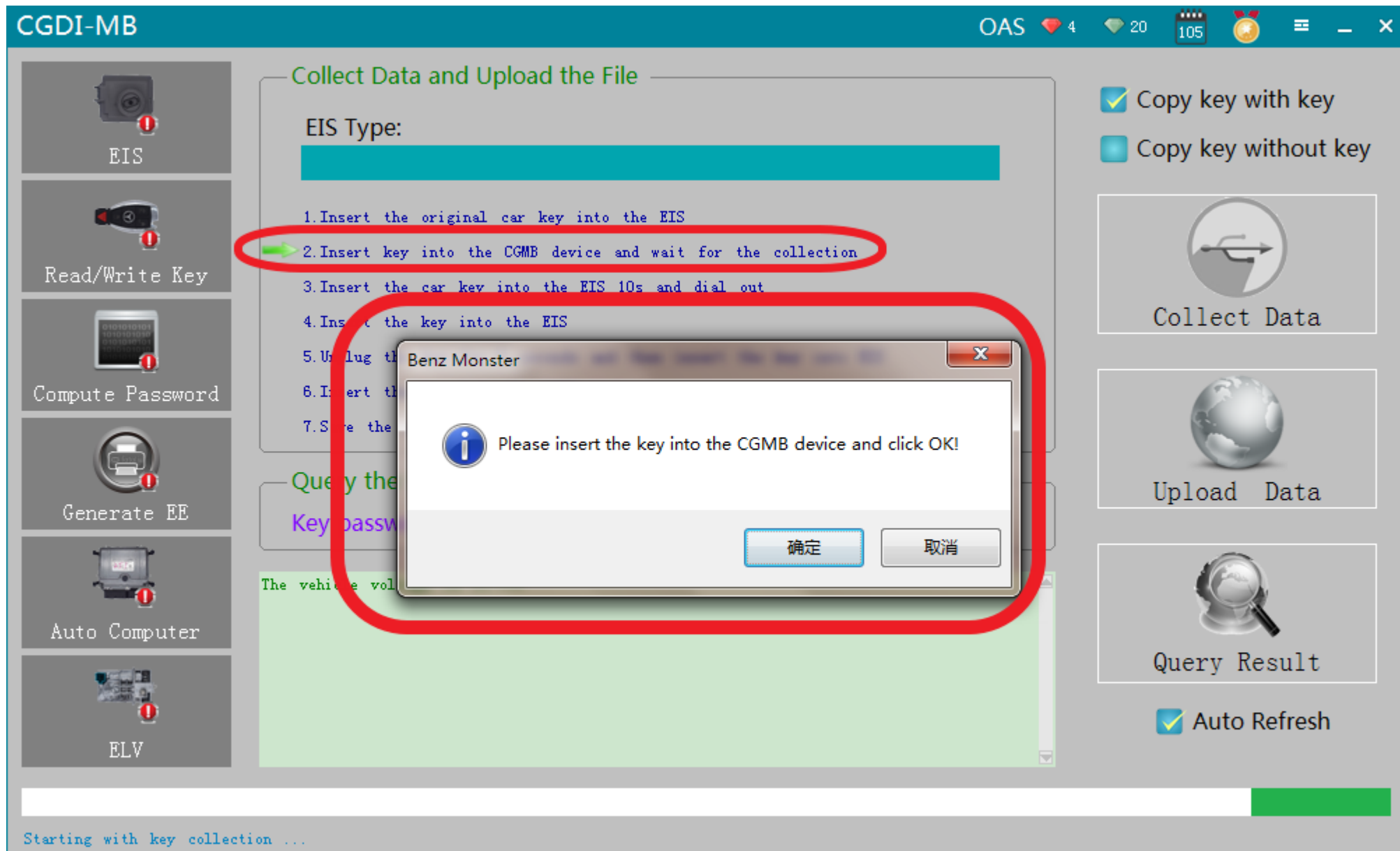
Please insert the key into EIS and click OK!

确定 取消

The vehicle voltage is

Starting with key collection ...

**please insert the key into EIS and click ok**



**please insert the key into the CGMB device and click ok**



CGDI-MB

OAS 4 20 105

EIS

Read/Write Key

Compute Password

Generate EE

Auto Computer

PI.V

### Collect Data and Upload the File

EIS Type: [Redacted]

1. Insert the original car key into the EIS
2. Insert key into the CGMB device and wait for the collection
3. Insert the car key into the EIS 10s and dial out
4. Insert the key into the EIS
5. Unplug the key for 5 seconds and then insert the key into EIS
6. Insert the key into the CGMB device
7. Save the generated files

### Query the Server and Wait For the Results

Key password [Redacted] Copy

```
The vehicle voltage is 11.77V  
Being collected, do not pull out the key ...
```

Copy key with key  
 Copy key without key

Collect Data

Upload Data

Query Result

Auto Refresh

68%

Starting with key collection ...

It is collecting the key data

CGDI-MB OAS 4 20 105

EIS

Read/Write Key

Compute Password

Generate EE

Auto Computer

ELV

### Collect Data and Upload the File

EIS Type:

1. Insert the original car key into the EIS
2. Insert key into the CGMB device and wait for the collection
3. Insert the car key into the EIS 10s and dial out
4. Insert the key into the EIS
5. Unplug the key
6. Insert the key in
7. Save the generated

### Query the Server

Key password

The vehicle voltage is 11.03V  
Being collected, do not  
EIS voltage is 11.03V

Copy key with key  
 Copy key without key

Collect Data

Upload Data

Query Result

Auto Refresh

100%

Starting with key collection ...

Benz Monster

Please insert the key into EIS and click OK!

确定

**Key collection finished, please insert the key into EIS and click ok**



EIS



Read/Write Key



Compute Password



Generate EE



Auto Computer



ELV

### Collect Data and Upload the File

EIS Type:

1. Insert the original car key into the EIS
2. Insert key into the CGMB device and wait for the collection
3. Insert the car key into the EIS 10s and dial out
4. Insert the key into the EIS
5. Unpl...
6. Inser...
7. Save

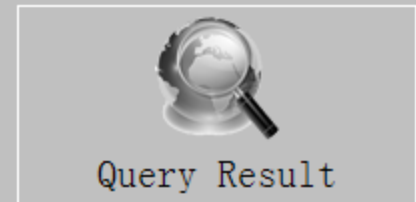
### Query

Key pa

Please wait 9 seconds ...

The vehicle voltage is 11.77V  
Being collected, do not pull out the key ...  
EIS voltage is 11.93V

- Copy key with key
- Copy key without key



- Auto Refresh

100%

Starting with key collection ...

please wait 9 seconds

CGDI-MB OAS 4 20 105

EIS

Read/Write Key

Compute Password

Generate EE

Auto Computer

ELV

Collect Data and Upload the File

EIS Type:

1. Insert the original car key into the EIS
2. Insert key into the CGMB device and wait for the collection
3. Insert the car key into the EIS 10s and dial out
4. Insert the key into the EIS
5. Unplug the key
6. Insert the
7. Save the g

Query the S

Key passwo

The vehicle voltage  
Being collected, d  
EIS voltage is 11.93v

Copy key with key

Copy key without key

Collect Data

Upload Data

Query Result

Auto Refresh

100%

Starting with key collection ...

Benz Monster

Please pull out the key from the EIS, and then click OK!

确定

please pull out the key from the EIS, and then click ok

CGDI-MB OAS 4 20 105

EIS

Read/Write Key

Compute Password

Generate EE

Auto Computer

ELV

### Collect Data and Upload the File

EIS Type:

1. Insert the original car key into the EIS
2. Insert key into the CGMB device and wait for the collection
3. Insert the car key into the EIS 10s and dial out
4. Insert the key into the EIS
5. Unplug the key for 5 seconds and then insert the key into EIS
6. Insert the Benz Monster
7. Save the

Query the Key password

The vehicle vol  
Being collected,  
EIS voltage is

Copy key with key

Copy key without key

Collect Data

Upload Data

Query Result

Auto Refresh

100%

Starting with key collection ...

Please insert the key into the EIS again and click OK!

确定 取消

please insert the key into the EIS again and click ok

CGDI-MB OAS 4 20 105

**EIS**

**Read/Write Key**

**Compute Password**

**Generate EE**

**Auto Computer**

**ELV**

**Collect Data and Upload the File**

EIS Type:

1. Insert the original car key into the EIS
2. Insert key into the CGMB device and wait for the collection
3. Insert the car key into the EIS 10s and dial out
4. Insert the key into the EIS
5. Unplug the key for 5 seconds and then insert the key into EIS
6. Insert the key into the CGMB device
7. Save

**Copy key with key**

**Copy key without key**

**Collect Data**

**Upload Data**

**Query Result**

**Auto Refresh**

**Benz Monster**

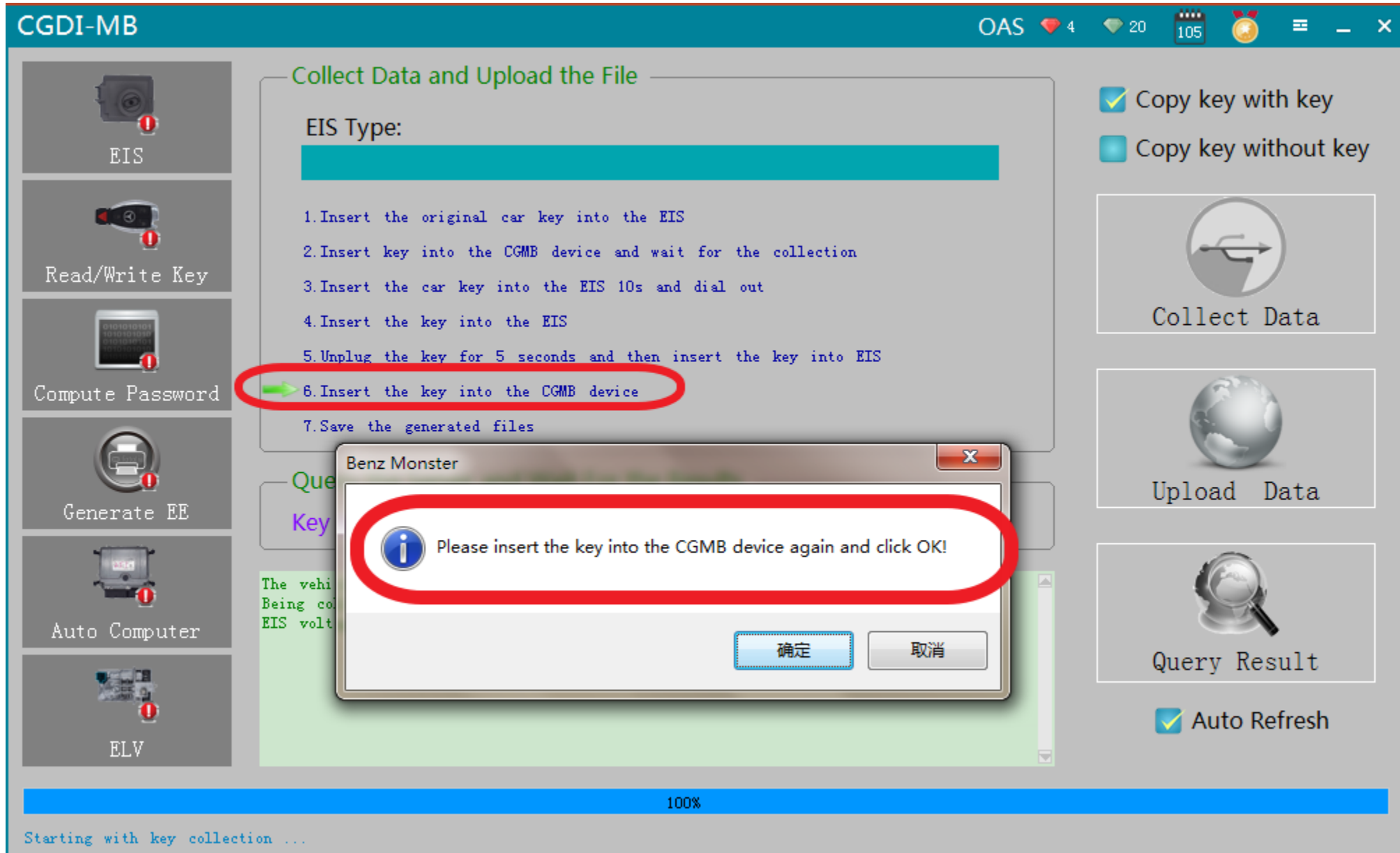
**Pull out the key for 5 seconds, then insert the EIS, then click OK!**

**确定** **取消**

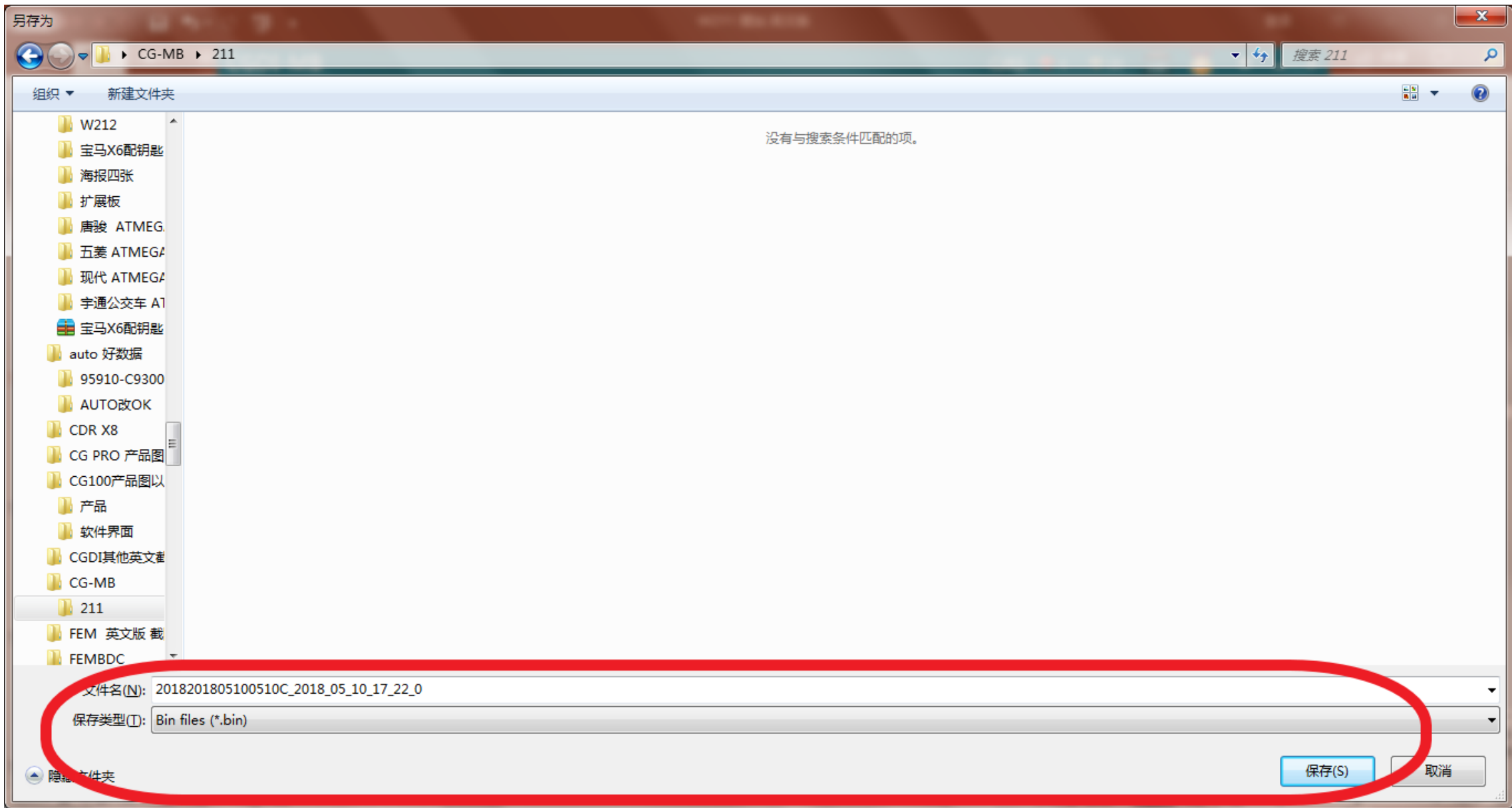
100%

Starting with key collection ...

**Pull out the key for 5 seconds, then insert the EIS, then click ok**



**please insert the key into the CG-MB device again and click ok**



**Collect success, save data, default file name**





EIS



Read/Write Key



Compute Password



Generate EE



Auto Computer



ELV

## Collect Data and Upload the File

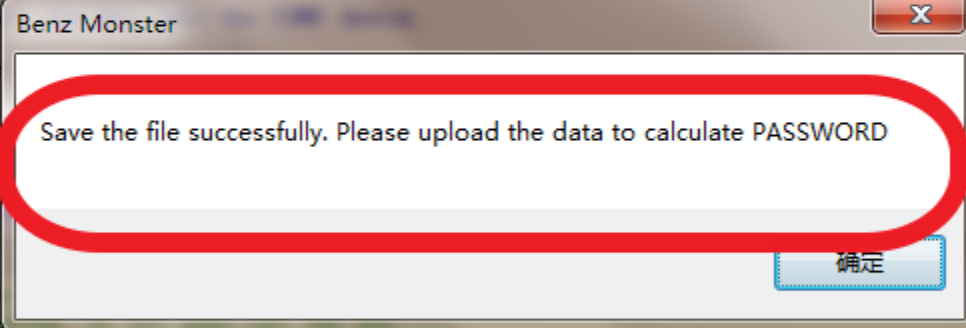
EIS Type:

1. Insert the original car key into the EIS
2. Insert key into the CGMB device and wait for the collection
3. Insert the car key into the EIS 10s and dial out
4. Insert the key into the EIS
5. Unplug the key for 5 seconds and then insert the key into EIS
6. Insert
7. Save

Query

Key p

```
The vehicle  
Being coll  
EIS voltage is 11.93V  
Collection is done!  
Processing data ...  
Save the file successfully. Please upload the data to calculate PASSWORD
```

 Copy key with key Copy key without key

Collect Data



Upload Data



Query Result

 Auto Refresh

100%

Collect data to save file successfully!

**Save the file successfully, click ok**



EIS



Read/Write Key



Compute Password



Generate EE



Auto Computer



ELV

## Collect Data and Upload the File

EIS Type:

- 1.Insert the original car key into the EIS
- 2.Insert key into the CGMB device and wait for the collection
- 3.Insert the car key into the EIS 10s and dial out
- 4.Insert the key into the EIS
- 5.Unplug the key for 5 seconds and then insert the key into EIS
- 6.Insert the key into the CGMB device
- 7.Save the generated files

## Query the Server and Wait For the Results

Key password

Copy

```
The vehicle voltage is 11.77V
Being collected, do not pull out the key ...
EIS voltage is 11.93V
Collection is done!
Processing data ...
Save the file successfully. Please upload the data to calculate PASSWORD
```

 Copy key with key Copy key without key

Collect Data



Upload Data

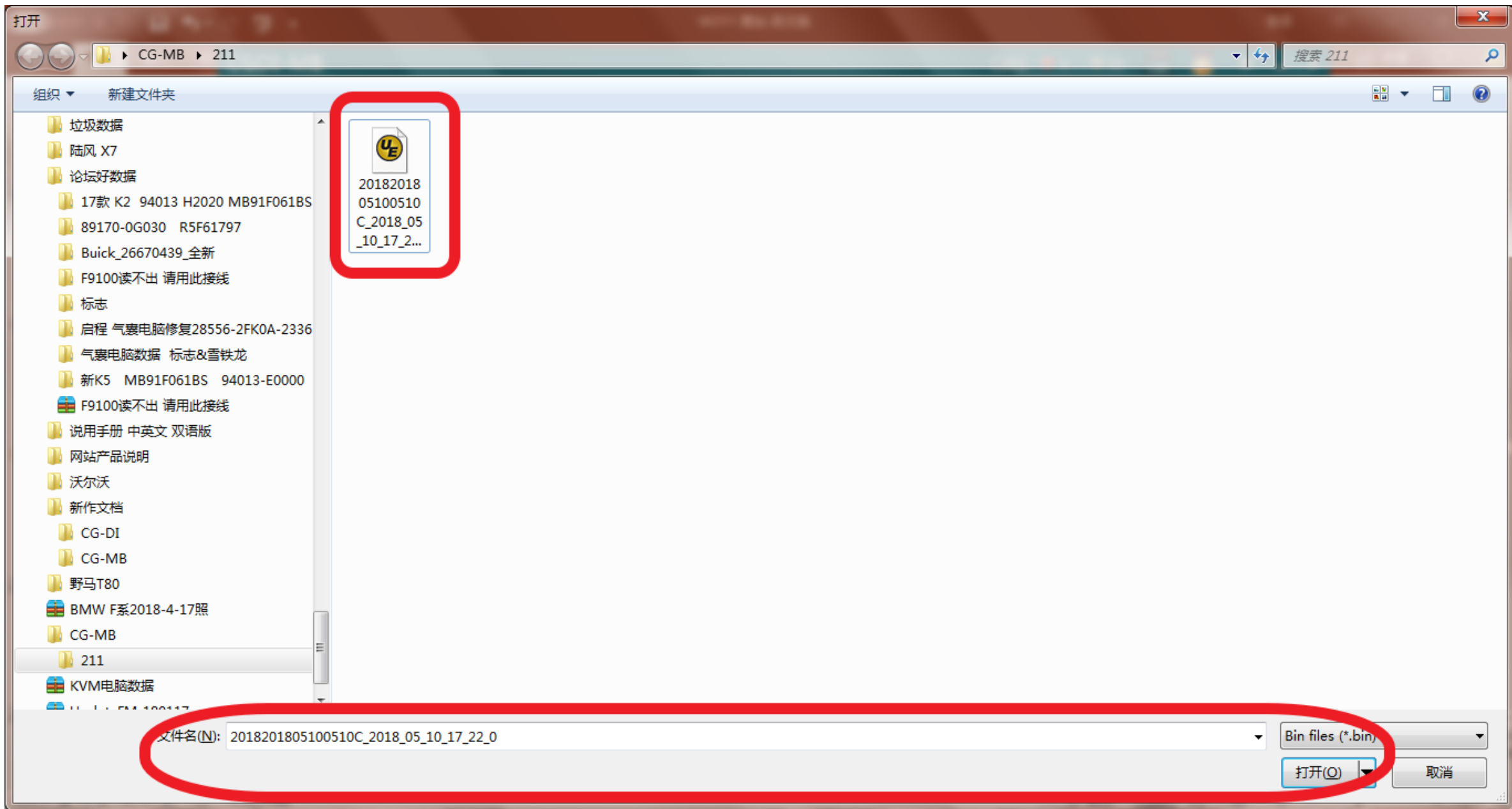


Query Result

 Auto Refresh

Collect data to save file successfully!

Click " Upload Data "



Open the file just saved in last step



EIS



Read/Write Key



Compute Password



Generate EE



Auto Computer



ELV

## Collect Data and Upload the File

EIS Type:

1. Insert the original car key into the EIS
2. Insert key into the CGMB device and wait for the collection
3. Insert the car key into the EIS 10s and dial out
4. Insert the key into the EIS
5. Unplug the key for 5 seconds and then insert the key into EIS
6. Insert
7. Save

Query

Key p

Your remain  
Upload data

- Copy key with key
- Copy key without key



Collect Data



Upload Data



Query Result

- Auto Refresh

Benz Monster

Upload data successfully, please click the [Query Results] button to query

确定

Upload data successfully, please click the [Query Results] button to query

Upload data successfully

CGDI-MB OAS 4 20 105

**EIS**

**Read/Write Key**

**Compute Password**

**Generate EE**

**Auto Computer**

**ELV**

### Collect Data and Upload the File

EIS Type:

- 1.Insert the original car key into the EIS
- 2.Insert key into the CGMB device and wait for the collection
- 3.Insert the car key into the EIS 10s and dial out
- 4.Insert the key into the EIS
- 5.Unplug the key for 5 seconds and then insert the key into EIS
- 6.Insert the key into the CGMB device
- 7.Save the generated files

### Query the Server and Wait For the Results

Key password

```
Select automatic refresh to automatically query until the results are calculated, or only once to exit!  
Querying...  
--- Query times: 1 --- Calculating, please wait ---  
--- Query times: 2 --- Calculating, please wait ---
```

Copy key with key  
 Copy key without key

Auto Refresh

Querying...

**Click“Query Result”, please wait patiently**

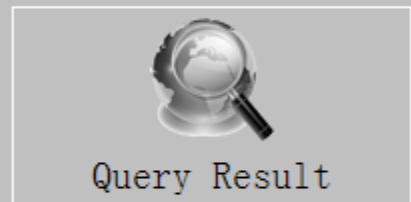
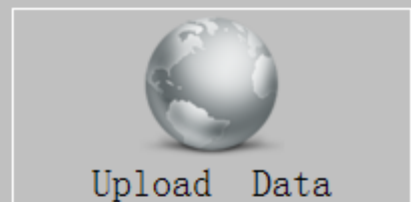
- EIS
- Read/Write Key
- Compute Password
- Generate EE
- Auto Computer
- ELV

### Collect Data and Upload the File

EIS Type:

1. Insert the original car key into the EIS
2. Insert key into the OBD device
3. Insert the car key into the
4. Insert the key into the EIS
5. Unplug the key for 5 seconds
6. Insert the key into the CGMB
7. Save the generated files

- Copy key with key
- Copy key without key



- Auto Refresh

**Benz Monster**

Computing success!

确定

### Query the Server and Wait for the Results

Key password E6 10 CC 71 CC 7E E5 53 Copy

```
--- query times: 12 --- Calculating, please wait ---  
--- Query times: 13 --- Calculating, please wait ---  
--- Query times: 14 --- Calculating, please wait ---  
--- Query times: 15 --- Calculating, please wait ---  
--- Query times: 16 --- Calculating, please wait ---  
--- Query times: 17 --- Calculating, please wait ---  
--- Query times: 18 --- Calculating, please wait ---  
--- Query times: 19 --- Calculating, please wait ---  
Computing success!
```

Querying...

**Computing success, click ok**

- EIS
- Read/Write Key
- Compute Password
- Generate EE
- Auto Computer
- ELV

### Collect Data and Upload the File

EIS Type:

- 1.Insert the original car key into the EIS
- 2.Insert key into the CGMB device and wait for the collection
- 3.Insert the car key into the EIS 10s and dial out
- 4.Insert the key into the EIS
- 5.Unplug the key for 5 seconds and then insert the key into EIS
- 6.Insert the key into the CGMB device
- 7.Save the generated files

### Query the Server and Wait For the Results


Key password `E6 10 CC 71 C0 7E E6 53` Copy

```
--- query times: 12 --- Calculating, please wait ---  
--- Query times: 13 --- Calculating, please wait ---  
--- Query times: 14 --- Calculating, please wait ---  
--- Query times: 15 --- Calculating, please wait ---  
--- Query times: 16 --- Calculating, please wait ---  
--- Query times: 17 --- Calculating, please wait ---  
--- Query times: 18 --- Calculating, please wait ---  
--- Query times: 19 --- Calculating, please wait ---  
Computing success!
```

- Copy key with key
- Copy key without key

  
Collect Data

  
Upload Data

  
Query Result

- Auto Refresh

Query end

**Copy password**

CGDI-MB OAS 4 20 105

**EIS**

Read/Write Key

Compute Password

Generate EE

Auto Computer

ELV

Welcome to use!

### EIS Basic Information

SSID: 68 FD 72 D3 Write

VIN: Allow Modify

EIS number: 2115451408

Mileage: 0 KM

The last key used: 1

The penultimate used: 4

### EIS Key Basic Information

	Used	Disabled
Key 1	<input checked="" type="checkbox"/>	<input type="checkbox"/>
Key 2	<input checked="" type="checkbox"/>	<input type="checkbox"/>
Key 3	<input checked="" type="checkbox"/>	<input checked="" type="checkbox"/>
Key 4	<input checked="" type="checkbox"/>	<input type="checkbox"/>
Key 5	<input type="checkbox"/>	<input type="checkbox"/>
Key 6	<input checked="" type="checkbox"/>	<input type="checkbox"/>
Key 7	<input type="checkbox"/>	<input type="checkbox"/>
Key 8	<input type="checkbox"/>	<input type="checkbox"/>

Key password: Copy Paste  
E6 10 CC 71 C0 7E E6 53

Special key: 7A D9 F9 5D 14 B5 F4 38

Erase password: Get

Enable Password: Get

Initialized  Personalized  
 TP cleared  Activated  
 Dealer EIS  FBS4

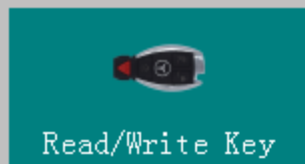
Read EIS Data  
Save EIS Data  
Load EIS Data  
Write EIS Data  
Wipe the EIS  
Clear TP Protection  
Activate EIS  
Disable Enable  
Sync W204 ELV

Go to the EIS interface and paste





EIS



Read/Write Key



Compute Password



Generate EE



Auto Computer



ELV

### EIS Basic Information

SSID	VIN	Write	Allow Modify
68 FD 72 D3			
EIS number	Mileage	The last key used	1
2115451408	0 KM	The penultimate used	4

### EIS Key Basic Information

	Used	Disabled	Copy	Paste
Key 1	E9 B8 F4 7E 79 E 9F		0 7	E6 53
Key 2	FB 04 20 1B B2 6 52			
Key 3	D9 B2 D9 0A C4 1 EF			
Key 4	09 50 B1 9F 3C 3 4F			
Key 5	7C 7C DD DA 57 31 75			
Key 6	9F 16 79 28 B9 93 94 69	<input checked="" type="checkbox"/>	<input type="checkbox"/>	
Key 7	01 87 A4 5F 75 62 21 B1	<input type="checkbox"/>	<input type="checkbox"/>	
Key 8	5C 07 CD E9 C2 A4 BD D7	<input type="checkbox"/>	<input type="checkbox"/>	

Initialized     Personalized  
 TP cleared     Activated  
 Dealer EIS     FBS4

Read EIS Data

Save EIS Data

Load EIS Data

Write EIS Data

Wipe the EIS

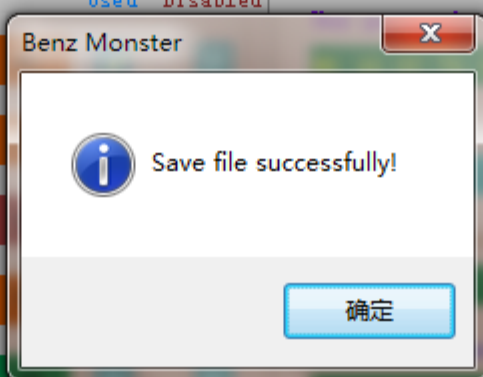
Clear TP Protection

Activate EIS

Disable

Enable

Sync W204 ELV



Save file successfully!

Save EIS data

CGDI-MB OAS 4 20 105

EIS

Read/Write Key

Compute Password

**Generate EE**

Auto Computer

ELV

### Load the EIS File and Confirm the PASSWORD

SSID: [Redacted] VIN: [Redacted]

Key password: [Redacted]

### Select the Key File Format and Location to Generate

1. Select the key file format
2. Select generate key position
3. Click the [Generate Key File] button to generate

V041     V051

Key 1     Key 2     Key 3     Key 4

Key 5     Key 6     Key 7     Key 8     Select All

**Load EIS File**

**Generate Key File**

**Operation Tip:**

1. Click the 'Load EIS File' button, check the SSID and password integrity
2. Select the key location and key type, then click the 'Generate key file' button, waiting for the results generated

Welcome to use!

**Turn to“Generate EE”, Load EIS file just saved**

CGDI-MB OAS 4 20 105

**Load the EIS File and Confirm the PASSWORD**

SSID: 68 FD 72 D3      VIN: [Redacted]

Key password: E6 10 CC 71 C0 7E E6 53

**Select the Key File Format and Location to Generate**

1. Select the key file format
2. Select generate key position
3. Click the [Generate Key File] button to generate

V041     V051

Key 1     Key 2     Key 3     Key 4

Key 5     Key 6     Key 7     Key 8     Select All

Loading EIS file...  
Load EIS file successfully!

Load EIS file successfully!

**Load EIS File**

**Generate Key File**

**EIS**

**Read/Write Key**

**Compute Password**

**Generate EE**

**Auto Computer**

**ELV**

**Check the information and click“Generate key file”**

CGDI-MB OAS 4 20 105

**Load the EIS File and Confirm the PASSWORD**

SSID: 68 FD 72 D3      VIN: [REDACTED]

Key password: E6 10 CC 71 C0 7E E6 53

**Select the Key File Format and Location to Generate**

1. Select the key file format
2. Select generate key position
3. Click the Generate

Key 1     [REDACTED]

Key 5     [REDACTED]

--- Query times: 3 --- Generating, please wait ---  
1 minutes ---

--- Query times: 4 --- Generating, please wait ---  
--- Query times: 5 --- Generating, please wait ---  
Generating the key file, please wait ...

Load EIS File

Generate Key File

**Benz Monster**

The key file was generated successfully!

确定

Load EIS file successfully!

**Generated file successfully and save the file**

- EIS
- Read/Write Key**
- Compute Password
- Generate EE
- Auto Computer
- ELV

Key Basic Information

SSID	Position
Available times	State <input type="button" value="Activate"/>
Times used	Version
Key password <input type="button" value="Copy"/> <input type="button" value="Paste"/>	Track code <input type="button" value="Copy"/>

Interface:

Infrared

NEC Adapter

00000000	00 00 00 00 00 00 00 00 00 00 00 00 00 00 00	.....
00000010	00 00 00 00 00 00 00 00 00 00 00 00 00 00 00	.....
00000020	00 00 00 00 00 00 00 00 00 00 00 00 00 00 00	.....
00000030	00 00 00 00 00 00 00 00 00 00 00 00 00 00 00	.....
00000040	00 00 00 00 00 00 00 00 00 00 00 00 00 00 00	.....
00000050	00 00 00 00 00 00 00 00 00 00 00 00 00 00 00	.....
00000060	00 00 00 00 00 00 00 00 00 00 00 00 00 00 00	.....
00000070	00 00 00 00 00 00 00 00 00 00 00 00 00 00 00	.....
00000080	00 00 00 00 00 00 00 00 00 00 00 00 00 00 00	.....
00000090	00 00 00 00 00 00 00 00 00 00 00 00 00 00 00	.....

Go to "Read/ write Key"



Put into new key

CGDI-MB OAS 4 20 105

EIS

Read/Write Key

Compute Password

Generate EE

Auto Computer

ELV

Key Data Information

SSID	00 00 00 00	Position	00
Available times	00	State	Activate Unused
Times used	00	Version	BE
Key password	Copy Paste	Track code	Copy

Interface:

Infrared

NEC Adapter

Read Key/Chip

Reset

Open/Write

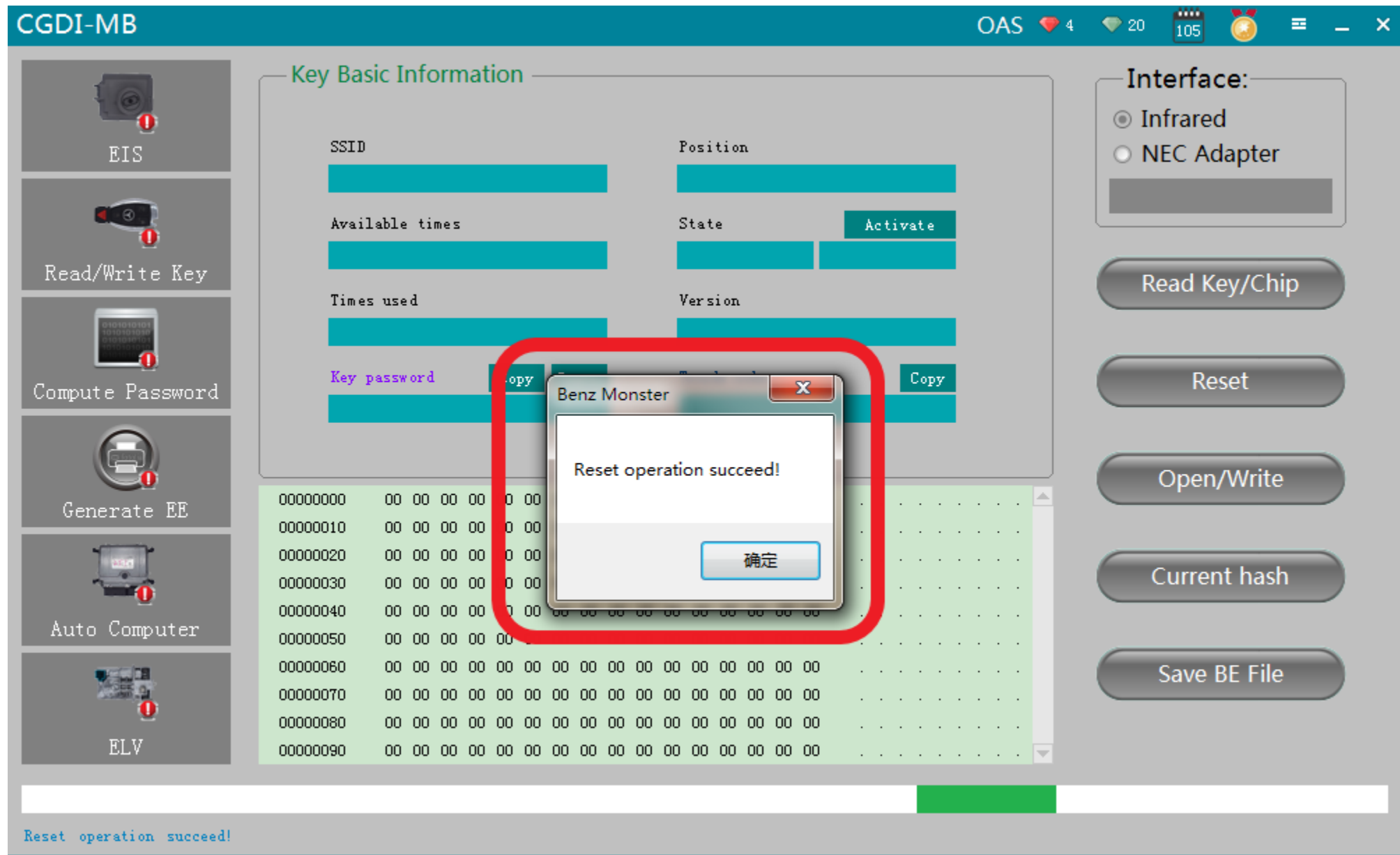
Current hash

Save BE File

```
00000000 00 00 00 00 00 00 00 00 00 00 00 00 00 00 00 .....
00000010 00 00 00 00 00 00 00 00 00 00 00 00 00 00 00 .....
00000020 00 00 00 00 00 00 00 00 00 00 00 00 00 00 00 .....
00000030 00 00 00 00 00 00 00 00 00 00 00 00 00 00 00 .....
00000040 00 00 00 00 00 00 00 00 00 00 00 00 00 00 00 .....
00000050 00 00 00 00 00 00 00 00 00 00 00 00 00 00 00 .....
00000060 00 00 00 00 00 00 00 00 00 00 00 00 00 00 00 .....
00000070 00 00 00 00 00 00 00 00 00 00 00 00 00 00 00 .....
00000080 00 00 00 00 00 00 00 00 00 00 00 00 00 00 00 .....
00000090 00 00 00 00 00 00 00 00 00 00 00 00 00 00 00 .....
```

Read success!

Show key information after reading



Click "Rest/wipe", prompt "Reset operation succeed, click ok



The image shows a screenshot of the CGDI-MB software interface. The window title is "CGDI-MB". In the top right corner, there are system icons for "OAS", a battery level of 4, a signal strength indicator of 20, a clock showing 10:5, and a notification bell icon.

The main interface is divided into several sections:

- Left Sidebar:** A vertical menu with icons and labels for "EIS", "Read/Write Key", "Compute Password", "Generate EE", "Auto Computer", and "ELV".
- Center Panel:** Titled "Key Basic Information", it contains fields for "SSID", "Position", "Available times", "State", and "Activate". Below these fields is a data table with hexadecimal values and their corresponding binary representations.
- Right Panel:** Titled "Interface:", it has radio buttons for "Infrared" and "NEC Adapter". Below these are buttons for "Read Key/Chip", "Reset", "Open/Write", "Current hash", and "Save BE File".

A red-bordered dialog box titled "Please Note" is overlaid on the center panel. It contains the following text:

**Please Note**

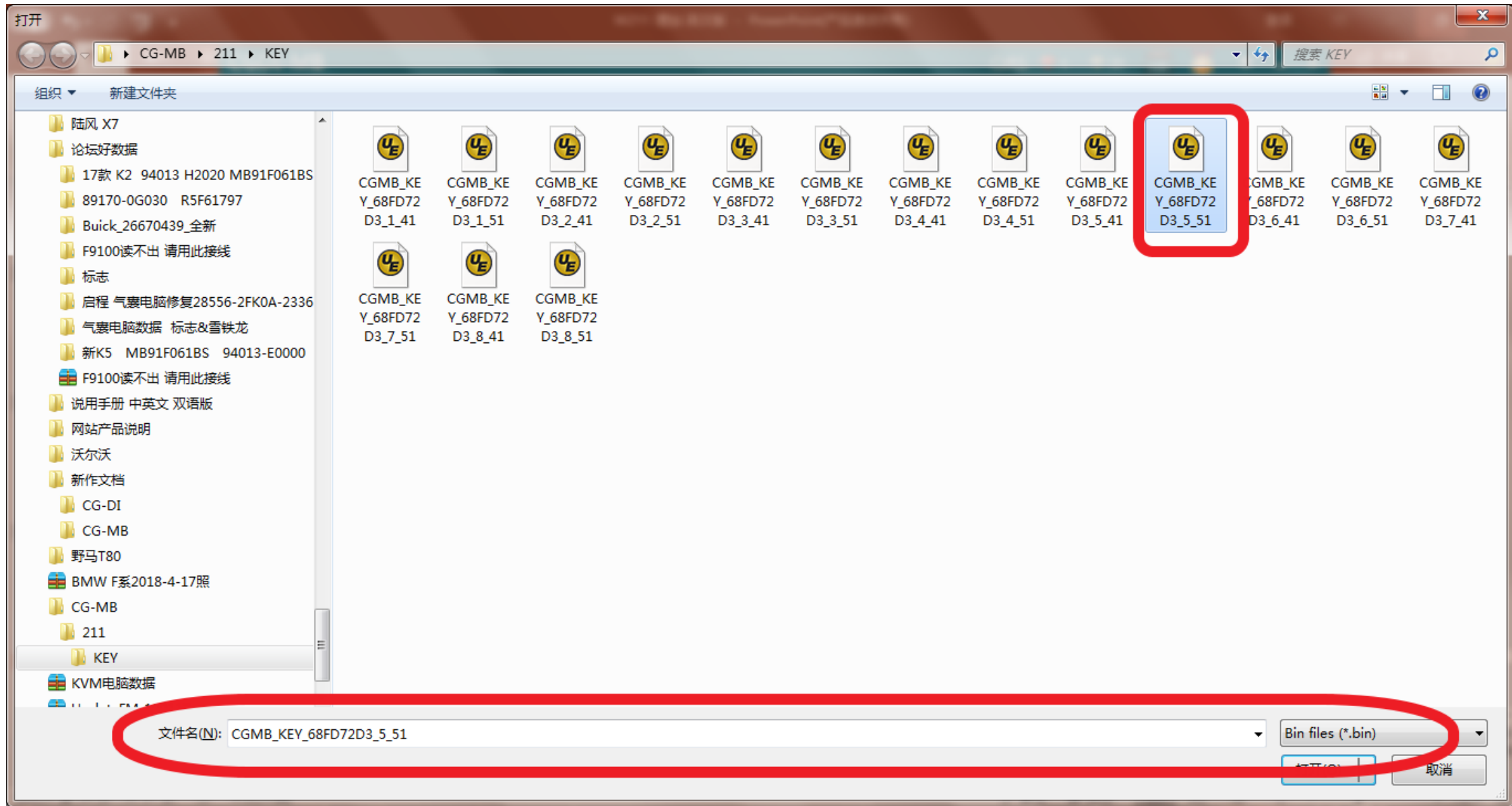
Smart key please choose 41 format, common key and BE key please choose 51 format!

When writing the original key, please make sure th at it is wiped by the CGMB, otherwise the write will fail!

An "OK" button is located at the bottom center of the dialog box.

At the bottom of the software window, a status bar displays the message: "Reset operation succeed!"

Click“open/write”, please note the prompt



**选择一未使用的钥匙位数据并打开**

- EIS
- Read/Write Key
- Compute Password
- Generate EE
- Auto Computer
- ELV

### Key Basic Information

SSID	Position
Available times	State <span>Activate</span>
Times used	Version
Key password <span>Copy</span>	<span>Copy</span>

### Interface:

- Infrared
- NEC Adapter

- Read Key/Chip
- Reset
- Open/Write
- Current hash
- Save BE File

00000000	01 E6 10 CC 7 C0	q . ~ . S
00000010	B9 94 BC C9 B F3	. . . . . C .
00000020	F7 76 C8 61 3 29	v . a > ) : . )
00000030	BF 35 CF 26 6 2E	5 . & b . g . +
00000040	13 9A 02 13 3 52	. . . . . 2 R . . w
00000050	BC 25 11 1F C 4B 65 92 3F F8 B5 6D 1B 7C C4 06	% . . . . . K e . ?
00000060	61 6A 60 7B 38	a j { 8 . . x F
00000070	FF FF FF AD 75 3D 57 DA DD 7C 7C 7F FF 00 00 02	. . . . . u = W . .
00000080	FF FF FF FF FF FF FF 4A 72 5E 84 6C FD 72 D3	. . . . . J
00000090	01 01 01 01 FF FF FF FF 73 0C FF FF FF FF 04 FC	. . . . . s

**Benz Monster**

Write success!

确定

Write success!

write success



**Insert the new key into EIS and start**

CGDI-MB OAS 4 20 105

**EIS**

Read/Write Key

Compute Password

Generate EE

Auto Computer

ELV

### EIS Basic Information

SSID: 68 FD 72 D3 VIN:  Write

EIS number: 2115451408 Mileage: 0 KM

The last key used: 5

The penultimate used: 1

Allow Modify

### EIS Key Basic Information

Key	Hex	Used	Disabled
Key 1	45 3B 69 AC 87 74 A6 AC	<input checked="" type="checkbox"/>	<input type="checkbox"/>
Key 2	FB 04 20 1B B2 6E 52 7A	<input checked="" type="checkbox"/>	<input type="checkbox"/>
Key 3	D9 B2 D9 0A C4 13 EF 6C	<input checked="" type="checkbox"/>	<input checked="" type="checkbox"/>
Key 4	09 50 B1 9F 3C 34 4F 78	<input checked="" type="checkbox"/>	<input type="checkbox"/>
Key 5	1B 6D B5 F8 3F 92 65 4B	<input checked="" type="checkbox"/>	<input type="checkbox"/>
Key 6	9F 16 79 28 B9 93 94 69	<input checked="" type="checkbox"/>	<input type="checkbox"/>
Key 7	01 87 A4 5F 75 62 21 B1	<input type="checkbox"/>	<input type="checkbox"/>
Key 8	5C 07 CD E9 C2 A4 BD D7	<input type="checkbox"/>	<input type="checkbox"/>

Key password:  Copy Paste

Special key: 7A D9 F9 5D 14 B5 F4 38

Erase password:  Get

Enable Password:  Get

Initialized  Personalized

TP cleared  Activated

Dealer EIS  FBS4

Read EIS Data

Save EIS Data

Load EIS Data

Write EIS Data

Wipe the EIS

Clear TP Protection

Activate EIS

Disable Enable

Sync W204 ELV

Read success!

**Read EIS again, 钥匙位提示已使用, 结合可启动, 匹配成功!**